

# The San Diego Weekly Union

SAN DIEGO, CALIFORNIA, THURSDAY MORNING, DECEMBER 3, 1914



## CROWDS VISIT FAIR FOR LAST PEEP BEFORE OPENING

Exposition Closes Gates to Be Dressed in 1915 Fashion.

## TRAFFIC MEN LAUD SHOW

San Bernardino Delegation Coming; Exhibits Arrive Daily.

## ELK FOR BALBOA PARK ARRIVE

Herd Makes Splendid Addition to Zoo

## Animals Passing Through Streets in Vans Arouse Admiring Interest.

## UNCLE SAM PLANS POSTOFFICE AT PANAMA-CALIFORNIA FAIR

## LARGER BOND ISSUE AUTHORIZED FOR LA JOLLA LINE

## COMMITTEE SUGGESTS CLOSING OF B STREET

## SPANISH FLAG PROMISED

## PLAN FORMULATED TO POPULARIZE AUTO RACE

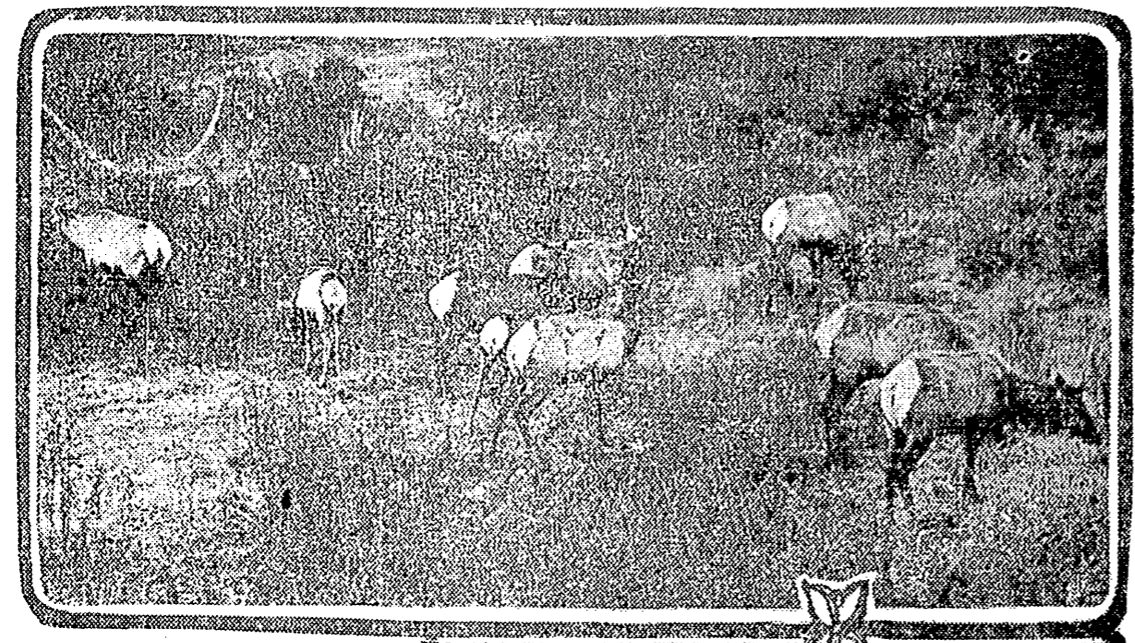
## MODEL BAKERY FOR EXPOSITION

## SHIP NEAR CRASH WITH MYSTERIOUS WAR VESSELS

## SAN DIEGANS MOURN DEATH OF RELATIVE

## NAVY WILL BUILD NEW-TYPE VESSEL

Two Pictures of the Elk Which Have Been Added to the Zoo in Balboa Park.



From Tuesday's Daily  
Bodily walking up to a mail box at Fifth and C streets yesterday morning, William Cartwright, an aged man, selected the largest package lying on top of it and started to unwrap it, evidently with the purpose of learning its contents. Traffic Officer Peterson interfered and placed Cartwright under arrest.

From Wednesday's Daily  
Work began yesterday on the Nevada building at the grounds of the Panama-California Exposition. The Nevada legislature appropriated \$100,000 for an exhibit at the San Diego Fair more than a year ago. One delay has followed another, but it is believed that by rushing operations the building and exhibit can be made ready for the opening, January 1.

From Monday's Daily  
Permission to issue bonds to the face value of \$350,000 has been granted by the state board of directors of the California Beach Railroad by the state railroad commission for the electrification of the line from San Diego to La Jolla. It is estimated that the cost of the line of the railroad before opening, asserts W. J. Gough, general manager of the road, electric cars will be running to La Jolla by March 1 next.

From Tuesday's Daily  
The following, which tells of the shipment of the Montana exhibit, is from the Independent, a newspaper of Helena:

From Tuesday's Daily  
The exhibition of the Panama-California Exposition has been a success from the start. The exhibit is being assembled in the building which has been erected on the grounds of the exposition. The exhibit is being assembled in the building which has been erected on the grounds of the exposition.

From Tuesday's Daily  
The exhibition of the Panama-California Exposition has been a success from the start. The exhibit is being assembled in the building which has been erected on the grounds of the exposition.

From Tuesday's Daily  
The exhibition of the Panama-California Exposition has been a success from the start. The exhibit is being assembled in the building which has been erected on the grounds of the exposition.

From Tuesday's Daily  
The exhibition of the Panama-California Exposition has been a success from the start. The exhibit is being assembled in the building which has been erected on the grounds of the exposition.

## Stamped Package Taken From Mail Box by Man Held to Explain Action

Postoffice Inspector Says Government Cannot Interfere in Strange Case.

From Tuesday's Daily  
Bodily walking up to a mail box at Fifth and C streets yesterday morning, William Cartwright, an aged man, selected the largest package lying on top of it and started to unwrap it, evidently with the purpose of learning its contents. Traffic Officer Peterson interfered and placed Cartwright under arrest.

## FREIGHTERS FILLED TO HATCH COVERS WITH CARGO

Increasing Traffic Delights Steamship Line Men Using Panama Canal.

From Tuesday's Daily  
All steamship lines using the Panama canal for their services between New York, San Diego and North Pacific ports are today very satisfied with the traffic since the opening of the waterway in August. Full cargoes are being carried on both westbound and eastbound voyages, and freight offering is plentiful.

## SPANISH FLAG PROMISED

San Diego Fair By King; Representative Coming

Don Juan Y. Gayangos Unable to Attend Opening of Exposition; Consul at San Francisco Named; Special Day Probable.

IN RESPONSE to an invitation of President G. Aubrey Davidson to be present at the opening ceremonies of the Panama-California Exposition, as the personal representative of Alfonso XIII, Don Juan Y. Gayangos, Spanish ambassador at Washington, yesterday wired that it would be impossible for him to be present at the opening, but that his majesty, the king of Spain, had designated the Spanish consul at San Francisco as his representative at the opening ceremonies.

## PLAN FORMULATED TO POPULARIZE AUTO RACE

San Diego Civic Bodies Will Be Asked for Indorsement of Event.

## COMMITTEES REPORT

Encouraging Progress Indicated; General Officers Elected.

By LEWIS H. PARK.  
Strong indorsement of the 300-mile auto classic on the Point Loma course January 3, given by the executive board of the Panama-California Exposition and the Order of Panama, marks the beginning of a movement to make the event one of city-wide popularity.

Letters from President G. Aubrey Davidson and Director General H. O. Davis, setting forth the immense value of the race to the Exposition and San Diego, have been given to Carl H. Hedbron, who will appear before San Diego's civic bodies to ask for their indorsement of the speed contest.

## White Khaki Mark for Bullets

Declares Navy Surgeon's Report Renewing Plea for Green Suits

By The Associated Press  
WASHINGTON, Dec. 1.—Another plea for uniforms of khaki and forestry green to replace the bullet-drawing white worn by American seamen, was made by Surgeon-General Bralsted of the navy in his annual report submitted today to Secretary Daniels. It was pointed out that the disadvantages of the white uniform were strikingly illustrated at Vera Cruz, where the sailors offered perfect targets for sharpshooters and snipers.

## MODEL BAKERY FOR EXPOSITION

GLOBE MILLING COMPANY'S PLAN

Ship to Be Shown.

From Tuesday's Daily  
The Globe Milling Company, which has been authorized to build a model bakery for the Panama-California Exposition, has announced that it will ship a model of the bakery to San Diego for the opening of the exposition.

## SHIP NEAR CRASH WITH MYSTERIOUS WAR VESSELS

Steamer Carolyn Reports Passing Three Cruisers With All Lights Out.

From Monday's Daily  
Three three-masted cruisers, steaming in fleet formation and with all lights doused, were sighted off the mouth of the Gulf of California last Thursday evening by Captain J. L. Blair of the steamer Carolyn.

## SAN DIEGANS MOURN DEATH OF RELATIVE

Andrew H. Gay, a brother of John H. Gay, and the father of Mrs. H. E. Doolittle, of this city, died in New Orleans on November 29. Mr. Gay was one of the largest sugar planters in the south.

## NAVY WILL BUILD NEW-TYPE VESSEL

By The Associated Press  
WASHINGTON, Dec. 1.—Bids will be opened in Washington December 15 for the construction of eight new submarines for the United States navy.

## CALIFORNIA RELIEF SHIP TO SAIL DECEMBER 5

SAN FRANCISCO, Dec. 1.—The steamer Camino, which will carry a bumper cargo of foodstuffs for the relief of California to war-torn Belgium, will leave San Francisco Saturday December 5 at noon according to announcement by the Belgian relief commission.

## COMMITTEE SUGGESTS CLOSING OF B STREET

Subway Under Thoroughfare Made Condition in Report On Santa Fe's Request.

From Tuesday's Daily  
If the Santa Fe will contract with the city to provide a subway for public use under B street at any time before the opening of the exposition, the Council may recommend that the street be closed to traffic at the end of B street should be vacated as a public thoroughfare at this time.

From Tuesday's Daily  
The Santa Agricultural College is working out a number of attractive designs for the Montana exhibit at both expositions. Alfred Atkins of the Agricultural College has charge of the three-drawer exhibit and will be at San Diego and San Francisco to assist in installing the exhibit.