

THE PILGRIM TOURS FOR CALIFORNIA IN 1915

RAYMOND & WHITCOMB CO-DIRECTORS

OFFICIALLY-APPOINTED-GENERAL-TOUR-AGENTS

PANAMA-PACIFIC-INTERNATIONAL-EXPOSITION

Official Tourist Representatives

SAN-DIEGO-EXPOSITION

General Tourist Representatives

CALIFORNIA-MISSION-PLAY



COPYRIGHT 1915 BY THE
PANAMA-PACIFIC INTERNATIONAL EXPOSITION CO.



OFFICE OF THE PRESIDENT

February 24th, 1914.

Messrs. Raymond & Whitcomb Company,
300 Washington Street,
Boston, Mass.

Gentlemen:

THE
PANAMA
—
PACIFIC

INTER
—
NATIONAL

EXPOSITION

I take pleasure in advising you of the appointment of your Company as "General Tour Agents" for the Panama-Pacific International Exposition to be held in San Francisco, February 20th to December 4th, 1915.

Under the rules of the Exposition this appointment remains in force until revoked by the Board of Directors.

I sincerely hope that this appointment will result to the advantage of the traveling public, the Exposition and your good selves.

Yours very truly,

President.

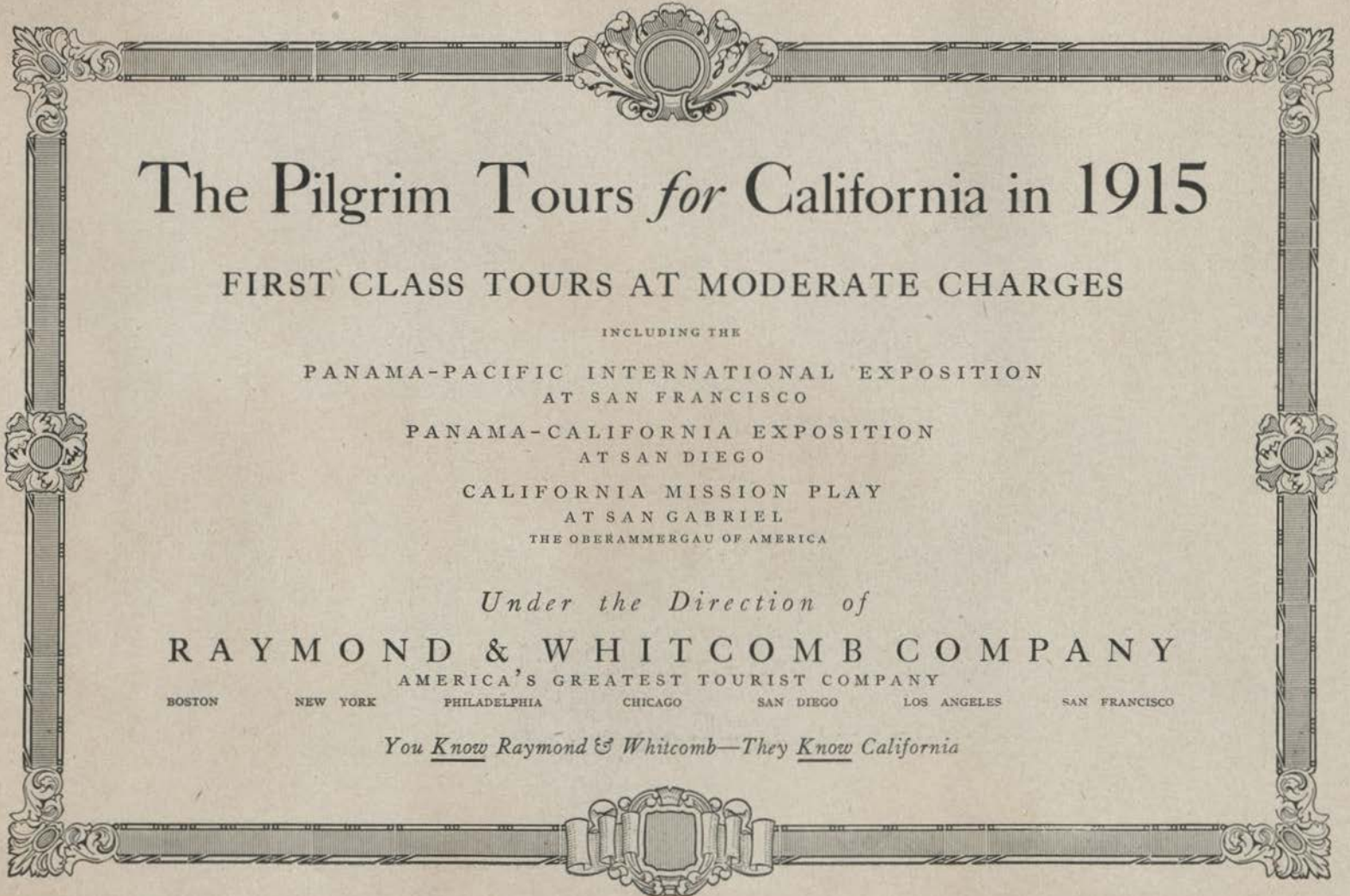
ATTN:

Secretary.

SAN FRANCISCO
CALIFORNIA
U S A

CCM/b.

424
35
K. 054
3



The Pilgrim Tours *for* California in 1915

FIRST CLASS TOURS AT MODERATE CHARGES

INCLUDING THE

PANAMA-PACIFIC INTERNATIONAL EXPOSITION
AT SAN FRANCISCO

PANAMA-CALIFORNIA EXPOSITION
AT SAN DIEGO

CALIFORNIA MISSION PLAY
AT SAN GABRIEL

THE OBERAMMERGAU OF AMERICA

Under the Direction of

RAYMOND & WHITCOMB COMPANY

AMERICA'S GREATEST TOURIST COMPANY

BOSTON

NEW YORK

PHILADELPHIA

CHICAGO

SAN DIEGO

LOS ANGELES

SAN FRANCISCO

You Know Raymond & Whitcomb—They Know California

THE PILGRIM TOURS



SAN FRANCISCO EXPOSITION

Copyright by Panama-Pacific Int'l Exposition

CALIFORNIA IN 1915

CALIFORNIA IN 1915 AND THE PILGRIM TOURS

1915 will be a historic year—talked of to your grandchildren and by them to their grandchildren—a red letter year not only in American history, but in the history of the world.

1915 marks the completion of the greatest achievement of man in the history of the world—the Panama Canal—projected 394 years ago—brought to realization by our own America.

The completion of the Panama Canal in 1915 will be celebrated in San Francisco by the Greatest Exposition the World Has Ever Known—the *Panama-Pacific International Exposition*—in which the countries of the world will participate on an unprecedented scale. Many countries have increased their appro-

priations—none have diminished their plans for participation—since the war began.

You will see the Great America of the West with its wonders of nature when there is combined with these the most remarkable spectacular educational entertainment ever conceived—a spectacle of unparalleled splendor.

San Francisco, always one of Earth's most fascinating Cities—which you owe yourself the pleasure of seeing sometime—will be in festival attire and festival mood—and so even more delightful than usual.

At San Diego, California, there will at the same time be a distinctively California Exposition—reflecting the romance and beauty of California—the *Panama-California Exposition*—which you can enjoy on the way to, or from, San Francisco as an added attraction—the romance represented by the Spanish padres, conquistadores and señoritas in scenes of old California—and the beauty by the glorious floriculture of the Golden State.

THE PILGRIM TOURS

This exposition will lay emphasis on processes rather than on products and its educational value will be beyond conception.

In addition to the two great Expositions at San Francisco and San Diego the impressive religious, historical and spectacular *California Mission Play* will be given from January to November, near Los Angeles, at San Gabriel, *The Oberammergau of America*.

This wonderful pageant play, like the world-known Passion Play, is in itself worth making a journey of thousands of miles to witness, aside from the other wonder-compelling California attractions of 1915. In this splendidly presented story of the heroic sacrifices of Father Junipero Serra and his followers is vividly shown to the mind's eye the early history of California—the beginning of civilization on our Pacific Coast. By this marvelous presentation of a sublime story as in no other way is California made understandable to the Eastern mind.

Altogether the opportunity is literally one of a life time to see your own wonderful country at its best and to understand it.

THE PILGRIM TOURS

As a member of a Pilgrim Tour your journey will be under expert, responsible management.

Raymond & Whitcomb Co., the Directors of the Pilgrim Tours *know* California from the traveler's viewpoint in a way impossible for any other organization or individual to know it.

Raymond & Whitcomb and California are associated words.

Raymond & Whitcomb Co., the Directors of the Pilgrim Tours took the first special through train to California in 1881.

Raymond & Whitcomb Co., the Directors of the Pilgrim Tours have taken special through trains to California every year since 1881.

CALIFORNIA IN 1915

Raymond & Whitcomb Co., the Directors of the Pilgrim Tours have taken many thousands of first class travelers in their parties to California—people who expected first class service—and have so invariably pleased their patrons that their business has increased to a scale which makes them America's Greatest Tourist Company.

Raymond & Whitcomb Co., the Directors of the Pilgrim Tours with their acknowledged supremacy in the California Tourist field, have made *remarkably low rates* for the members of the Pilgrim Tours, *for a first class trip under responsible management.*

Raymond & Whitcomb Co., the Directors of the Pilgrim Tours have absolute responsibility. Being an old and proved Eastern institution with its own offices in San Francisco and Los Angeles, you *know* in dealing with them that you will receive just what you are promised.

FOR YOUR PROTECTION

Above all it is to your own interest to keep in mind that Raymond & Whitcomb Co., the Directors of the Pilgrim Tours are the *Officially Appointed General Tour Agents* of the *Panama-Pacific International Exposition at San Francisco*, *Official Tourist Representatives* of the *Panama-California Exposition at San Diego* and *General Tourist Representatives* of the *California Mission Play.*

These official appointments are simply a recognition on the part of the several Presidents and Boards of Directors of the *Raymond & Whitcomb Company's pre-eminence in the California tourist field.* Also as a sign to the public that in their official opinion prospective visitors should place themselves under the protection of a company known through long years as *faithfully carrying out its contracts* and as *knowing* the *California* hotel and transportation situation as no other organization—new or old—can know it.

THE PILGRIM TOURS

One Raymond & Whitcomb graduate is President of the Southern California Hotel Men's Association. Another is President of the Northern California Hotel Men's Association.

These things mean everything to you. Many concerns have sprung up all over the country for this occasion only—never heard of before and entirely without experience. Such people can make extremely low charges because, not having a reputation to sustain and having no future to protect, they can deal in the traditional glittering generalities in their announcements, while the results to their passengers are certain to be disappointing in the extreme.

Other agencies, which heretofore have operated only foreign tours, are now, because of the war shutting off their usual fields, announcing tours to California. This field being quite new to them they *will be but strangers guiding strangers*. "You *know* Raymond and Whitcomb. They *know* California."

The Pilgrim Tours charges are as low as can be made for a first class trip and faithful, responsible, expert service.

On such a journey you want nothing less.

And it is important to keep in mind that traveling with a Pilgrim Tour party is *more economical* than traveling alone because of our long friendly acquaintance and special arrangements with hotel and transportation people. You get better service for the same money or the same service for less money.

As a member of a Pilgrim Tour party you will be enabled to enjoy the experience of a life-time—will receive the best, most responsible, most expert service—and at the lowest rates possible for such service, and have an experience of wonder and happiness never to be forgotten.

CALIFORNIA IN 1915

THE RATES ARE INCLUSIVE OF ALL EXPENSES AS ENUMERATED

FIRST-CLASS RAILWAY or other TRANSPORTATION. Half a Section (double berth) in FIRST-CLASS (Standard) PULLMAN SLEEPING CARS throughout the transcontinental journeys. ROOMS at EXCELLENT HOTELS. MEALS, SIDE TRIPS, EXCURSIONS, AUTOMOBILE and CARRIAGE DRIVES as shown in the itineraries.

MEALS are included except at San Diego, Los Angeles, San Francisco and on trains. (The meals that have not been included or charged for are usually *a la carte* and experience has shown that most people in such cases prefer to be left full freedom of choice.)

TRANSFERS of members between stations and hotels. BAGGAGE—transfer as well as transportation of one hundred and fifty pounds. SERVICES of our OFFICES, AGENTS and CONDUCTORS.

Note:—In connection with the various transportation and sleeping car companies, hotels or other services Raymond & Whitcomb Company and The Pilgrim Tours act only as agents and as such will not be liable for any delay, accident or loss. The program may be altered where necessity or the comfort or welfare of the passengers suggests, but there is no likelihood of this.

REGISTRATION METHODS

Persons desiring to join one of our parties should send their names to be registered as early as convenient. A deposit of Ten Dollars (credited against the final payment) secures a place in the cars, at hotels where sojourns may be made, and in every way insures membership in the party. Tickets can be taken and paid for at the convenience of the passenger any time to within three weeks of the date of departure; and, should the passenger even then be prevented from going, the money will be refunded. The advantage of sending in names early is readily seen.

Members are not compelled to come to the starting point in order to join a party, but may connect with the train at any convenient place along the route. In all cases places are reserved for passengers who are to join en route.

PERSONAL ESCORT AND ATTENTION

Our Pilgrim Tour parties are always under the charge of competent conductors, who devote their attention to the welfare and comfort of the passengers, and who superintend all business arrangements. Hotel accommodations are arranged in advance, and in other particulars the members of the party are relieved of many petty cares inseparable from ordinary travel. Thus the tourist is left to the fullest enjoyment of the journey, while appointed agents attend to the task of arranging its details.

THE PILGRIM TOURS



Copyright by Panama-Pacific Int'l Exposition
SAN FRANCISCO EXPOSITION

DIRECTIONS FOR MAILING LETTERS

Members of our parties can have their letters addressed "Care of Raymond & Whitcomb Co., 509 South Spring St., Los Angeles, California." Letters sent to our care in San Francisco should likewise be directed, "Care of Raymond & Whitcomb Co., 397 Monadnock Building, San Francisco, California." First-class mail matter (letters) will be forwarded from our offices to any address given.

GUIDE BOOKS

We would call the attention of the traveler to Baedeker's "Handbook for the United States," which is prepared with great accuracy, and is accompanied by a profusion of maps and plans.

Incidentally we may quote the following from Baedeker:

"The Raymond & Whitcomb Company arranges for a large series of excursions in special vestibuled trains, under the care of one of its representatives, which relieves the traveler of almost all the inconveniences of a journey in a strange land.

"The arrangements are made so as to afford the widest possible freedom of movement in every way, and the charges are reasonable."

CALIFORNIA IN 1915

SYNOPSIS OF TOURS

Tour Days	Date	Outward and Return Routes	Page
A	35 Feb. 2	GRAND CANYON, COLORADO	10
D	35 Feb. 10	NEW ORLEANS, COLORADO	13
B	35 Mar. 2	GRAND CANYON, COLORADO	10
E	33 Mar. 11	NEW ORLEANS, COLORADO	17
G	28 Mar. 23	GRAND CANYON, COLORADO	20
F	33 Apr. 8	NEW ORLEANS, COLORADO	17
H	28 Apr. 20	GRAND CANYON, COLORADO	20
C	35 May 4	GRAND CANYON, COLORADO	10
I	28 May 18	GRAND CANYON, COLORADO	20
J	40 June 9	YELLOWSTONE, CANADIAN ROCKIES	23
K	40 June 15	YELLOWSTONE, CANADIAN ROCKIES	23
L	40 June 22	YELLOWSTONE, CANADIAN ROCKIES	23
W	28 June 26	COLORADO, GRAND CANYON	27
M	40 June 29	YELLOWSTONE, CANADIAN ROCKIES	23
X	28 July 3	COLORADO, GRAND CANYON	27
N	40 July 6	YELLOWSTONE, CANADIAN ROCKIES	23
Y	28 July 10	COLORADO, GRAND CANYON	27
O	40 July 13	YELLOWSTONE, CANADIAN ROCKIES	23
P	40 July 20	YELLOWSTONE, CANADIAN ROCKIES	23
Q	40 July 27	YELLOWSTONE, CANADIAN ROCKIES	23
Z	28 July 31	COLORADO, GRAND CANYON	27
R	40 Aug. 3	YELLOWSTONE, CANADIAN ROCKIES	23
S	40 Aug. 10	YELLOWSTONE, CANADIAN ROCKIES	23
Z ₂	28 Aug. 14	COLORADO, GRAND CANYON	27
T	40 Aug. 17	YELLOWSTONE, CANADIAN ROCKIES	23
Z ₃	28 Sept. 4	COLORADO, GRAND CANYON	27
Z ₄	28 Sept. 18	COLORADO, GRAND CANYON	27
Z ₅	28 Oct. 2	COLORADO, GRAND CANYON	27
Z ₆	28 Oct. 18	COLORADO, GRAND CANYON	27

THE PILGRIM TOURS

THE RATES

The Rate quoted at the head of each itinerary is from **New York**.

The Rate from **Boston** is **\$6.00** additional in every case.

The Rate from **Philadelphia** is **\$1.00** less than from New York in every case.

The Rate from **Chicago** back to Chicago is **\$45.00** less than from New York for all tours except Tour D. (For Tours E and F independent railway ticket direct to New Orleans, joining the party there on arrival.)

The Rates from other points for all tours, except Tour D, including independent railway ticket outward to Chicago or New Orleans and returning from Chicago, are:

From **Cleveland** back to Cleveland **\$30.00** less than from New York.

From **Indianapolis** back to Indianapolis **\$35.00** less than from New York.

From **Buffalo** back to Buffalo **\$20.00** less than from New York.

From **Detroit** back to Detroit **\$30.00** less than from New York.

From **Pittsburg** back to Pittsburg **\$25.00** less than from New York.

For Tour D, including independent railway ticket direct to New Orleans and returning independent railway ticket direct from Chicago, the rates, as compared with New York, are:

From **Chicago** **\$55** less; **Cleveland** **\$40** less; **Indianapolis** **\$45** less; **Detroit** **\$40** less; **Buffalo** **\$30** less; **Pittsburg** **\$35** less.

PILGRIM TOURS

A (February 2), B (March 2) and C (May 4)

Thirty-five Days A—From New York **Price \$380**

Thirty-five Days B and C—From New York **Price \$325**

TUESDAYS, FEBRUARY 2, MARCH 2 AND MAY 4. Leave **Boston and New York** (by the New York Central Lines) or **Philadelphia** by afternoon train in first-class Standard Pullman sleeping cars.

WEDNESDAYS, FEBRUARY 3, MARCH 3 AND MAY 5. Arrive at **Chicago** in the afternoon. Leave **Chicago** in the evening over the **Santa Fe Route**.

THURSDAYS, FEBRUARY 4, MARCH 4 AND MAY 6. Pass through **Kansas City, Missouri**, in the morning and spend the day traversing the fertile, rolling prairies of **Kansas**.

FRIDAYS, FEBRUARY 5, MARCH 5 AND MAY 7. In the evening stop long enough at **Albuquerque, New Mexico**, to enjoy the famous Fred Harvey Indian Museum. Continue across the picturesque deserts of **New Mexico and Arizona**.

SATURDAYS, FEBRUARY 6, MARCH 6, AND MAY 8 AND SUNDAYS, FEBRUARY 7, MARCH 7 AND MAY 9. At the **Grand Canyon of Arizona**, one of the show-places of the earth—a stupendous panorama of form and color. Arrive Saturday morning and leave Sunday morning, thus giving passengers the opportunity to see the splendid spectacle of the

CALIFORNIA IN 1915

Canyon both at sunset and sunrise. All meals furnished at the fine Hotel El Tovar on the brink of the **Canyon**.

SOUTHERN CALIFORNIA

MONDAYS, FEBRUARY 8, MARCH 8 AND MAY 10. Arrive at sunny **Riverside, California**, in the morning. Breakfast and lunch furnished at the famous Glenwood Mission Inn, and an automobile ride through the orange groves, and up **Mount Rubidoux**, with magnificent views of Southern California and the snowy Sierras. Leave Riverside in the afternoon and arrive at **San Diego** in the late afternoon. Transfer to new Hotel San Diego, or other excellent hotel.

TUESDAYS, FEBRUARY 9, MARCH 9 AND MAY 11 TO SATURDAYS, FEBRUARY 13, MARCH 13 AND MAY 15. At **San Diego**, the southernmost city of California, beautifully situated on the blue waters of the Pacific Ocean near the Mexican boundary line. Here with the establishment of the first Mission by Father Junipero Serra in 1769, was the beginning of civilization on the Pacific Coast. Three admissions furnished to the remarkable **Panama California Exposition** and an automobile trip to beautiful **Point Loma**.

SATURDAYS, FEBRUARY 13, MARCH 13 AND MAY 15. Leave **San Diego** after luncheon and arrive at

Los Angeles in the late afternoon. Transfer to Hotel Clark (new and all rooms with bath) or other excellent hotel.

SUNDAYS, FEBRUARY 14, MARCH 14 AND MAY 16 TO WEDNESDAYS, FEBRUARY 17, MARCH 17 AND MAY 19. At **Los Angeles**, the metropolis of Southern California. During our stay we shall take the **Balloon Route Trip**, to many cities and beaches, but above all else in interest, we shall make an excursion to **Pasadena** with **San Gabriel Mission**, to attend the wonderful **Mission Play**, for which excellent orchestra seats will be provided. This remarkable dramatic pageant of the romantic early history of California has been happily and justly compared with the Passion Play of Oberammergau. Those who have seen it in preliminary presentations have not only been enthusiastic in expressions of admiration of the spectacle but have been profoundly impressed by the spirit of religious sincerity pervading the play and its performance.

THURSDAYS, FEBRUARY 18, MARCH 18 AND MAY 20. At **Santa Barbara** on the **California Riviera**, leaving **Los Angeles** in the morning and arriving at **Santa Barbara** in the late forenoon. Lunch and dinner furnished at the palatial Pctter Hotel. Carriage drive to the fine old **Santa Barbara Mission** and along the **Boulevard** to **Montecito** and **Miramar**. Leave **Santa Barbara** in the evening.

THE PILGRIM TOURS

NORTHERN CALIFORNIA

FRIDAYS, FEBRUARY 19, MARCH 19 AND MAY 21. At **Pacific Grove**, arriving in the morning. Meals and lodgings furnished at the Pacific Grove Hotel, and automobile trip over the famous **Boulevard Drive** along the shores of **Monterey Bay**, including **Del Monte** and **Monterey**.

SATURDAYS, FEBRUARY 20, MARCH 20 AND MAY 22. Leave **Pacific Grove** in the morning going via **Santa Cruz** to the **Big Tree Grove**. Leave after luncheon and arrive at **San Francisco** in the late afternoon. Transfer to the splendid Hotel Grandada (or other excellent hotel.)

SUNDAYS, FEBRUARY 21, MARCH 21 AND MAY 23 TO SUNDAYS, FEBRUARY 28, MARCH 28 AND MAY 30. In **San Francisco** with its countless attractions. Five admissions to the great **Panama-Pacific Exposition**; an automobile sight-seeing trip to **Golden Gate Park** and the **Cliff House**, and a trip to the top of **Mount Tamalpais**, the "Right of the West," by the Crookedest Railroad in the World" will be furnished.

SUNDAYS, FEBRUARY 28, MARCH 28 AND MAY 30. Leave **San Francisco** in the evening by the Southern Pacific Railroad.

MONDAYS, MARCH 1 AND 29, AND MAY 31. En route through **Nevada**.

TUESDAYS, MARCH 2 AND 30, AND JUNE 1. Arrive at

Salt Lake City, Utah, in the morning. Lunch will be furnished, also carriage drive about this interesting oasis city. Leave **Salt Lake City** in the afternoon by the Denver & Rio Grande Railroad.

WEDNESDAYS, MARCH 3 AND 31, AND JUNE 2. En route across the **Rocky Mountains**, passing through the thrilling and world-famed **Royal Gorge** in the Canyon of the Arkansas River. Arrive at **Manitou** in the late afternoon. Transfer to the **Cliff House**.

THURSDAYS, MARCH 4, APRIL 1 AND JUNE 3. At **Manitou**. Carriage drive through the fantastic **Garden of the Gods**, with its natural wonders and superb views of **Pike's Peak**.

FRIDAYS, MARCH 5, APRIL 2 AND JUNE 4. Leave **Manitou** in the morning and arrive about noon at **Denver**. A mile above the sea. Lunch and dinner furnished and beautiful sight-seeing trip through the city and parks. Leave **Denver** in the evening by the Union Pacific Railway.

SATURDAYS, MARCH 6, APRIL 3 AND JUNE 5. En route across the **Nebraska Prairies**.

SUNDAYS, MARCH 7, APRIL 4 AND JUNE 6. Arrive at **Chicago** in the morning and leave in the forenoon by the New York Central Lines.

MONDAYS, MARCH 8, APRIL 5 AND JUNE 7. Arrive at **Boston**, **New York** and **Philadelphia** in the afternoon.

CALIFORNIA IN 1915



Copyright by Panama-Pacific Int'l Exposition
SAN FRANCISCO EXPOSITION

PILGRIM TOUR D

Thirty-five Days. From New York **Price \$395**

For other rates see page 10

WEDNESDAY, FEBRUARY 10. Leave **Boston** in the afternoon. Leave **New York** and **Philadelphia** in the evening.

THURSDAY, FEBRUARY 11. At **Washington, D. C.**, arriving in the morning. Transfer to Congress Hall Hotel. Sightseeing trip about **Washington**, visiting the principal public buildings. Leave **Washington** in the evening by the Southern Railway.

FRIDAY, FEBRUARY 12. Arrive at **Asheville, N. C.**, in the forenoon. Lunch and dinner furnished; also a drive to **Biltmore** and through the beautiful Vanderbilt estate. Leave **Asheville** in the evening.

SATURDAY, FEBRUARY 13. Arrive at **Chattanooga** in the morning. Meals furnished during the day, and a trip to the summit of **Lookout Mountain**, also a ride over the historic **Chickamauga Battlefield**. Leave **Chattanooga** in the evening.

MARDI GRAS IN NEW ORLEANS

SUNDAY, FEBRUARY 14 TO TUESDAY, FEBRUARY 16. Arrive at **New Orleans**, the most fascinating city of the South, in the morning. Transfer to the Hotel Grunewald. An automobile sightseeing

THE PILGRIM TOURS



Copyright by Panama-Pacific Int'l Exposition
SAN FRANCISCO EXPOSITION

trip will be provided through the parks and the quaint old French Quarter.

We are especially fortunate in the opportunity to enjoy the brilliant processions and gaities of the Mardi Gras season, culminating with the festivities of Shrove Tuesday.

TUESDAY, FEBRUARY 16. Leave **New Orleans** about midnight by the Southern Pacific Railroad.

WEDNESDAY, FEBRUARY 17. Arrive at **Galveston, Texas**, in the morning. Meals furnished; also automobile drive about the city. Leave **Galveston** in the evening.

THURSDAY, FEBRUARY 18. At old **San Antonio, Texas**, the city of the "Alamo," arriving in the morning and leaving in the evening. Meals provided and an automobile sightseeing trip to the fine **Spanish Missions** and other points of interest. Leave **San Antonio** in the evening.

FRIDAY, FEBRUARY 19. En route through Texas, along the **Mexican Border**, with a short stop at **El Paso** in the evening.

SATURDAY, FEBRUARY 20. En route through **New Mexico** and **Arizona**. Arrive at **Riverside, California**, in the evening. Transfer to the Mission Inn.

SOUTHERN CALIFORNIA

SUNDAY, FEBRUARY 21. At **Riverside**. Automobile ride through orange groves and up **Mount Rubi-**

CALIFORNIA IN 1915

doux, with magnificent views of **Southern California** and the snowy **Sierras**.

MONDAY, FEBRUARY 22. Leave **Riverside** in the morning and arrive at **San Diego** about noon. Transfer to the New Hotel San Diego (or other excellent hotel).

MONDAY, FEBRUARY 22 TO THURSDAY, FEBRUARY 25. At **San Diego**, the southernmost city of California, beautifully situated on the blue waters of the Pacific Ocean, near the Mexican Boundary line. Here with the establishment of the first mission by Father Junipero Serra in 1769, was the beginning of civilization on the Pacific Coast. Three admissions furnished to the remarkable **Panama California Exposition**, and an automobile trip to beautiful **Point Loma**.

FRIDAY, FEBRUARY 26. Leave **San Diego** in the forenoon. Arrive at **Los Angeles** in the early afternoon. Transfer to the Hotel Clark (new and all rooms with bath) or other excellent hotel.

FRIDAY, FEBRUARY 26 TO SUNDAY, FEBRUARY 28. At **Los Angeles**, the metropolis of Southern California. During our stay we shall take the **Balloon Route Trip** to many beaches and cities but above all else in interest, we shall make an excursion to **Pasadena**, with **San Gabriel Mission**, to attend the wonderful **Mission Play**, for which excellent orchestra seats will be provided. This remarkable

dramatic pageant of the romantic early history of California has been happily and justly compared with the Passion Play of Oberammergau. Those who have seen it in preliminary presentations, have not only been enthusiastic in expression of admiration of the spectacle, but have been profoundly impressed by the spirit of religious sincerity pervading the play and its performance.

MONDAY, MARCH 1. Leave **Los Angeles** in the morning, and arrive at **Santa Barbara** in the late forenoon. Lunch and dinner furnished at the palatial **Potter Hotel**. Carriage drive to the fine old **Santa Barbara Mission** and along the **Boulevard** to **Montecito** and **Miramar**. Leave **Santa Barbara** in the evening.

NORTHERN CALIFORNIA

TUESDAY, MARCH 2. At **Del Monte**, arriving in the morning. Breakfast and lunch furnished at the magnificent Hotel del Monte and automobile trip over the famous **Boulevard Drive** along the shore of **Monterey Bay**. Leave **Del Monte** in the afternoon and arrive at **San Francisco** in the evening. Transfer to the splendid Hotel Granada (or other excellent hotel).

WEDNESDAY, MARCH 3 TO MONDAY, MARCH 8. At **San Francisco**, with its countless attractions. Five admissions furnished to the great **Panama-Pacific Exposition**, an automobile sightseeing trip

THE PILGRIM TOURS



Copyright by Panama-Pacific Int'l Exposition
SAN FRANCISCO EXPOSITION

to **Golden Gate Park** and the **Cliff House**, and a trip to the top of **Mount Tamalpais**, the "Right of the West," by the "Crookedest Railroad in the World."

MONDAY, MARCH 8. Leave **San Francisco** in the evening by the Southern Pacific Railroad.

TUESDAY, MARCH 9. En route through **Nevada**.

WEDNESDAY, MARCH 10. Arrive at **Salt Lake City, Utah**, in the morning. Lunch furnished and carriage drive about this interesting oasis city. Leave **Salt Lake City** in the afternoon by the Denver and Rio Grande Railroad.

THURSDAY, MARCH 11. En route across the **Rocky Mountains**, passing through the thrilling and world-famed **Royal Gorge** in the Canyon of the Arkansas River. Arrive at **Manitou** in the late afternoon. Transfer to the Cliff House. All meals and lodgings furnished.

FRIDAY, MARCH 12. At **Manitou**. Carriage drive through the fantastic **Garden of the Gods**, with its natural wonders and superb views of **Pike's Peak**.

SATURDAY, MARCH 13. Leave **Manitou** in the morning. Arrive about noon at **Denver**, a mile above the sea. Lunch and dinner furnished and beautiful sightseeing trip through the city and parks. Leave **Denver** in the evening by the Union Pacific Railway.

CALIFORNIA IN 1915

SUNDAY, MARCH 14. En route across the **Nebraska Prairies**.

MONDAY, MARCH 15. Arrive at **Chicago** in the morning. Leave Chicago in the forenoon by the New York Central Lines.

TUESDAY, MARCH 16. Arrive **Boston, New York and Philadelphia** in the afternoon.

PILGRIM TOURS

E (March 11) and F (April 8)

Thirty-three Days From New York **Price \$325**

For other rates see page 10

THURSDAYS, MARCH 11 AND APRIL 8. Leave **Boston, New York and Philadelphia** in the evening.

FRIDAYS, MARCH 12 AND APRIL 9. At **Washington, D. C.**, arriving in the morning. Transfer to Congress Hall Hotel. Sightseeing trip about **Washington**, visiting the principal public buildings. Leave Washington in the evening by the Southern Railway.

SATURDAYS, MARCH 13 AND APRIL 10. En route southward.

SUNDAYS, MARCH 14 AND APRIL 11. Arrive at **New Orleans**, the most fascinating city of the South, in the morning. Transfer to the Hotel Grunewald. An automobile sightseeing trip will be provided through the parks and quaint old French Quarter.

MONDAYS, MARCH 15 AND APRIL 12. Leave **New Orleans** in the forenoon by the Southern Pacific Railroad.

TUESDAYS, MARCH 16 AND APRIL 13. At **San Antonio, Texas**, the city of the "Alamo," arriving in the morning. Meals provided and an automobile sightseeing trip to the fine **Spanish Missions** and other points of interest. Leave **San Antonio** in the evening.

WEDNESDAYS, MARCH 17 AND APRIL 14. En route through **Texas**, along the Mexican border, with a short stop at **El Paso, Texas** in the evening.

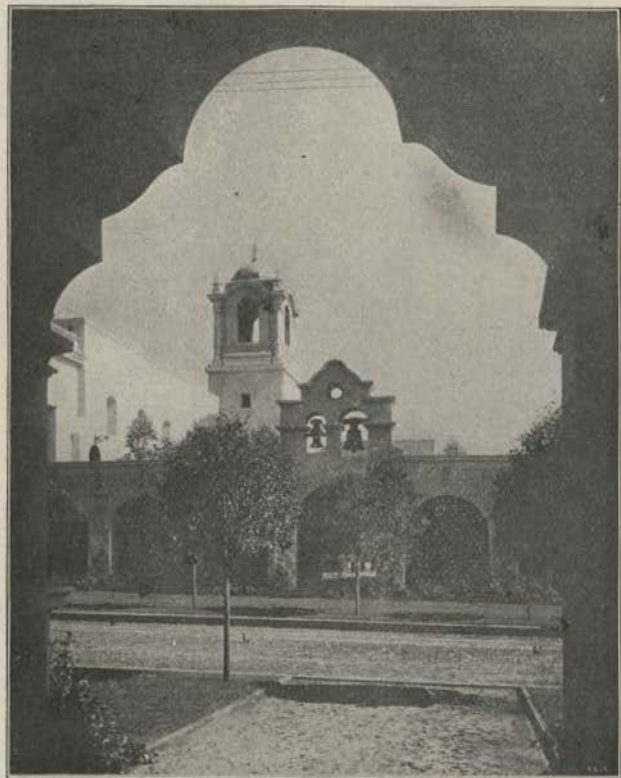
THURSDAYS, MARCH 18 AND APRIL 15. En route through **New Mexico and Arizona**. Arrive at Riverside, Cal., in the evening. Transfer to the Glenwood Mission Inn.

SOUTHERN CALIFORNIA

FRIDAYS, MARCH 19 AND APRIL 16. At **Riverside**. Automobile ride through orange groves and up **Mount Rubidoux**, with magnificent views of **Southern California** and the sunny **Sierras**. Leave **Riverside** after luncheon and arrive at **San Diego** in the late afternoon. Transfer to the New San Diego Hotel, or other excellent hotel.

SATURDAYS, MARCH 20 AND APRIL 17 TO TUESDAYS, MARCH 23 AND APRIL 20. At **San Diego**, the southernmost city of California, beautifully situ-

THE PILGRIM TOURS



Copyright by Panama-California Exposition
SAN DIEGO EXPOSITION

ated on the blue waters of the Pacific Ocean, near the Mexican boundary line. Here with the establishment of the first mission by Father Junipero Serra, in 1769, was the beginning of civilization on the Pacific Coast. Three admissions furnished to the remarkable **Panama-California Exposition**, and an automobile trip to beautiful **Point Loma**.

TUESDAYS, MARCH 23 AND APRIL 20. Leave **San Diego** after luncheon and arrive at **Los Angeles** in the late afternoon. Transfer to the Hotel Clark (new and all rooms with bath) or other excellent hotel.

WEDNESDAYS, MARCH 24 AND APRIL 21 TO FRIDAYS, MARCH 26 AND APRIL 23. At **Los Angeles**, the metropolis of Southern California. During our stay we shall take the **Balloon Route Trip** to eighteen cities and beaches, and we shall make an excursion to **Pasadena** with **San Gabriel Mission**, to attend the wonderful **Mission Play**, for which excellent orchestra seats will be provided. This remarkable dramatic pageant of the romantic early history of California has been happily and justly compared with the **Passion Play** of Oberammergau. Those who have seen it in preliminary presentations have not only been enthusiastic in expression of admiration of the spectacle but have been profoundly impressed by the spirit of religious sincerity pervading the play and its performance.

CALIFORNIA IN 1915

SATURDAYS, MARCH 27 AND APRIL 24. Leave **Los Angeles** in the morning and arrive at **Santa Barbara** in the late forenoon. Lunch and dinner furnished at the palatial Potter Hotel. Carriage drive to the fine old **Santa Barbara Mission** and along the **Boulevard to Montecito and Miramar.** Leave **Santa Barbara** in the evening.

NORTHERN CALIFORNIA

SUNDAYS, MARCH 28 AND APRIL 25. At **Pacific Grove**, arriving in the morning. Meals and lodgings furnished at the Pacific Grove Hotel, and automobile trip over the famous "Boulevard Drive" along the shores of **Monterey Bay**, including **Del Monte** and **Monterey.**

MONDAYS, MARCH 29 AND APRIL 26. Leave **Pacific Grove** in the morning, going by way of **Santa Cruz** to the **Big Tree Grove.** Leave after luncheon and arrive at **San Francisco** in the late afternoon. Transfer to the splendid Hotel Granada (or other excellent hotel.)

TUESDAYS, MARCH 30 AND APRIL 27 TO SUNDAYS, APRIL 4 AND MAY 2. In **San Francisco**, with its countless attractions. Five admissions to the great **Panama-Pacific Exposition**; an automobile sightseeing trip to **Golden Gate Park** and the **Cliff House**, and a trip to the top of **Mount Tamalpais**, the "Ridge of the West," by the "Crookedest Railroad in the World" will be furnished.

SUNDAYS, APRIL 4 AND MAY 2. Leave **San Francisco** in the evening by the Southern Pacific Railroad.

MONDAYS, APRIL 5 AND MAY 3. En route through **Nevada.**

TUESDAYS, APRIL 6 AND MAY 4. Arrive at **Salt Lake City, Utah**, in the morning. Lunch will be furnished; also carriage drive about this interesting oasis city. Leave **Salt Lake City** in the afternoon by the Denver & Rio Grande Railroad.

WEDNESDAYS, APRIL 7 AND MAY 5. En route across the **Rocky Mountains**, passing through the thrilling and world-famed **Royal Gorge** in the Canyon of the Arkansas River. Arrive at **Manitou** in the late afternoon. Transfer to the Cliff House.

THURSDAYS, APRIL 8 AND MAY 6. At **Manitou.** Carriage drive through the fantastic **Garden of the Gods**, with its natural wonders and superb views of Pike's Peak.

FRIDAYS, APRIL 9 AND MAY 7. Leave **Manitou** in the morning and arrive about noon at **Denver**, a mile above the sea. Lunch and dinner furnished and beautiful sightseeing trip through the city and parks. Leave **Denver** in the evening by the Union Pacific Railway.

SATURDAYS, APRIL 10 AND MAY 8. En route across the **Nebraska Prairies.**

SUNDAYS, APRIL 11 AND MAY 9. Arrive at **Chicago** in

THE PILGRIM TOURS



Copyright by Panama-California Exposition
SAN DIEGO EXPOSITION

the morning and leave in the forenoon by the New York Central Lines.

MONDAYS, APRIL 12 AND MAY 10. Arrive at **Boston, New York** and **Philadelphia** in the afternoon.

PILGRIM TOURS

G (March 23), H (April 20) and I (May 18)

Twenty-eight Days From New York **Price \$285**

For other rates see page 10

TUESDAYS, MARCH 23, APRIL 20 AND MAY 18. Leave **Boston** and **New York** by the New York Central Lines, or **Philadelphia** by afternoon train in first-class standard Pullman sleeping cars.

WEDNESDAYS, MARCH 24, APRIL 21 AND MAY 19. Arrive at **Chicago** in the afternoon. Leave **Chicago** in the evening over the **Santa Fe Route**.

THURSDAYS, MARCH 25, APRIL 22 AND MAY 20. Pass through **Kansas City, Missouri**, in the morning and spend the day traversing the fertile, rolling prairies of **Kansas**.

FRIDAYS, MARCH 26, APRIL 23 AND MAY 21. In the evening stop long enough at **Albuquerque, New Mexico**, to enjoy the famous Fred Harvey Indian Museum. Continue across the picturesque deserts of **New Mexico** and **Arizona**.

SATURDAYS, MARCH 27, APRIL 24 AND MAY 22 AND SUNDAYS, MARCH 28, APRIL 25 AND MAY 23. At the **Grand Canyon of Arizona**, one of the show

CALIFORNIA IN 1915

places of the earth—a stupendous panorama of form and color. Arrive Saturday morning and leave Sunday morning, thus giving passengers the opportunity to see the splendid spectacle of the **Canyon** both at sunset and sunrise. All meals furnished at the fine Hotel El Tovar, on the brink of the **Canyon**.

SOUTHERN CALIFORNIA

MONDAYS, MARCH 29, APRIL 26 AND MAY 24. Arrive at sunny **Riverside, California**, in the morning. Breakfast and lunch furnished at the famous Glenwood Mission Inn and an automobile ride through the orange groves, and up **Mount Rubidoux**, with magnificent views of **Southern California** and the snowy **Sierras**. Leave **Riverside** in the afternoon and arrive at **San Diego** in the late afternoon. Transfer to New Hotel San Diego, or other excellent hotel.

TUESDAYS, MARCH 30, APRIL 27 AND MAY 25 TO THURSDAYS, APRIL 1 AND 29 AND MAY 27. At **San Diego**, the southernmost city of California, beautifully situated on the blue waters of the Pacific Ocean near the Mexican boundary line. Here with the establishment of the first mission by Father Junipero Serra in 1769, was the beginning of civilization on the Pacific Coast. Three admissions furnished to the remarkable **Panama-California Exposition**, and an automobile trip to beautiful

Point Loma. Leave **San Diego** in the afternoon of Thursday, and arrive at **Los Angeles** in the late afternoon. Transfer to Hotel Clark (new and all rooms with bath), or other excellent hotel.

FRIDAYS, APRIL 2 AND 30 AND MAY 28 AND SATURDAYS, APRIL 3, MAY 1 AND 29. At **Los Angeles**, the metropolis of Southern California. During our stay, we shall take the **Balloon Route Trip** to eight cities and ten beaches, and make an excursion to **Pasadena**, with **San Gabriel Mission**, to attend the wonderful **Mission Play**, for which excellent orchestra seats will be provided. This remarkable dramatic pageant of the romantic early history of California has been happily and justly compared with the Passion Play of Oberammergau. Those who have seen it in preliminary presentations, have not only been enthusiastic in expressions of admiration of the spectacle, but have been profoundly impressed by the spirit of religious sincerity pervading the play and its performance.

SUNDAYS, APRIL 4, MAY 2 AND 30. At **Santa Barbara**, on the **California Riviera**, leaving **Los Angeles** in the morning and arriving at **Santa Barbara** in the late forenoon. Lunch and dinner furnished at the palatial Potter Hotel. Carriage drive to the fine old **Santa Barbara Mission** and along the **Boulevard** to **Montecito** and **Miramar**. Leave **Santa Barbara** in the evening.

THE PILGRIM TOURS



(Centre of Stage Only)

THE MISSION PLAY

NORTHERN CALIFORNIA

MONDAYS, APRIL 5, MAY 3 AND 31. At **Del Monte**, arriving in the morning. Breakfast and lunch furnished at the magnificent **Hotel del Monte** and 'automobile trip over the famous **Boulevard Drive** along the shore of **Monterey Bay**. Leave **Del Monte** in the afternoon and arrive at **San Francisco** in the evening. Transfer to the splendid **Hotel Granada** (or other excellent hotel.)

TUESDAYS, APRIL 6, MAY 4 AND JUNE 1 TO SUNDAYS, APRIL 11, MAY 9 AND JUNE 6. In **San Francisco**, with its countless attractions. Five admissions furnished to the great **Panama-Pacific International Exposition**; an automobile sightseeing trip to **Golden Gate Park** and the **Cliff House**, and a trip to the top of **Mount Tamalpais**, the "Righi of the West," by the "Crookedest Railroad in the World."

SUNDAYS, APRIL 11, MAY 9 AND JUNE 6. Leave **San Francisco** in the evening by the Southern Pacific Railroad.

MONDAYS, APRIL 12, MAY 10 AND JUNE 7. En route through **Nevada**.

TUESDAYS, APRIL 13, MAY 11 AND JUNE 8. Arrive at **Salt Lake City, Utah**, in the morning. Lunch furnished and carriage drive about this interesting oasis city. Leave **Salt Lake City** in the afternoon by the **Denver & Rio Grande Railroad**.

CALIFORNIA IN 1915

WEDNESDAYS, APRIL 14, MAY 12 AND JUNE 9. En route across the **Rocky Mountains**, passing through the thrilling and world-famed "Royal Gorge" in the Canyon of the Arkansas River. Arrive at **Manitou** in the late afternoon. Transfer to the Cliff House at **Manitou**. All meals and lodgings furnished.

THURSDAYS, APRIL 15, MAY 13 AND JUNE 10. At **Manitou**. Carriage drive through the fantastic **Garden of the Gods**, with its natural wonders and superb views of **Pike's Peak**.

FRIDAYS, APRIL 16, MAY 14 AND JUNE 11. Leave **Manitou** in the morning. Arrive about noon at **Denver**, a mile above the sea. Lunch and dinner furnished and beautiful sightseeing trip through the city and parks. Leave **Denver** in the evening by the Union Pacific Railway.

SATURDAYS, APRIL 17, MAY 15 AND JUNE 12. En route across the **Nebraska Prairies**.

SUNDAYS, APRIL 18, MAY 16 AND JUNE 13. Arrive at **Chicago** in the morning. Leave Chicago in the forenoon by the New York Central Lines.

MONDAYS, APRIL 19, MAY 17 AND JUNE 14. Arrive at **Boston, New York and Philadelphia** in the afternoon.

PILGRIM TOURS

J (June 9), K (June 15), L (June 22), M (June 29), N (July 6), O (July 13), P (July 20), Q (July 27), R (August 3), S (August 10), T (August 17)

Forty Days From New York **Price \$395**

For other rates see page 10

DEPARTURES: WEDNESDAY, JUNE 9, AND TUESDAYS, JUNE 15, 22 AND 29, JULY 6, 13, 20 AND 27, AUGUST 3, 10, 17, 24 AND 31.

TUESDAY, FIRST DAY. Leave **Boston** and **New York** (by New York Central Lines) or **Philadelphia** by afternoon train in first-class standard Pullman sleeping cars.

WEDNESDAY, SECOND DAY. Arrive in **Chicago** in the evening and leave by the Northwestern and Union Pacific Route.

THURSDAY, THIRD DAY. En route across the **Nebraska Prairies**.

FRIDAY, FOURTH DAY. At **Denver**, a mile above the sea. Arrive in the morning. Breakfast and lunch furnished and beautiful sightseeing trip through the city and parks. Leave **Denver** in the afternoon and arrive at **Colorado Springs** in the late afternoon. Transfer to the Cliff House at **Manitou**; meals and lodging furnished.

THE PILGRIM TOURS



(Centre of Stage Only)

THE MISSION PLAY

SATURDAY, FIFTH DAY. At **Manitou**. A carriage drive is furnished through the fantastic **Garden of the Gods**, with its natural wonders and superb views of **Pike's Peak**.

SUNDAY, SIXTH DAY. En route across the **Rocky Mountains**, leaving **Manitou** in the morning by the Denver & Rio Grande Railroad and passing through the thrilling and world-famed **Royal Gorge**, the Canyon of the Arkansas River.

MONDAY, SEVENTH DAY. Arrive at **Salt Lake City, Utah**, about noon. Lunch furnished and a carriage drive about this interesting oasis city. Leave **Salt Lake City** in the evening via Oregon Short Line.

TUESDAY TO FRIDAY, EIGHTH TO ELEVENTH DAYS. In **Yellowstone National Park**, arriving in the morning of the eighth day, and making a thorough round of the Park and visiting the **Lower and Upper Geyser Basins, Yellowstone Lake, the Grand Canyon of the Yellowstone, Norris Geyser Basin** and other parts of this amazing region of natural wonders. Transportation (by stage) and meals and lodging furnished during the entire trip. Leave the Park in the evening of the eleventh day.

SATURDAY, TWELFTH DAY. At **Salt Lake City**, arriving in the morning and leaving in the afternoon by the Salt Lake Route.

CALIFORNIA IN 1915

SOUTHERN CALIFORNIA

SUNDAY, THIRTEENTH DAY. At charming **Riverside, California**, arriving in the early afternoon. Dinner furnished at the famous **Glenwood Mission Inn**, and an automobile ride through orange groves and up **Mount Rubidoux** with magnificent views of **Southern California** and the snowy **Sierras**. Leave **Riverside** in the evening.

MONDAY TO WEDNESDAY, FOURTEENTH TO SIXTEENTH DAYS. At **San Diego**, the southernmost city of California, beautifully situated on the blue waters of the Pacific Ocean, near the Mexican boundary. Arrive in the morning of the fourteenth day and transfer to New Hotel San Diego (or other excellent hotel). Three admissions furnished to the remarkable **Panama-California Exposition** and an automobile trip to beautiful **Point Loma**. Leave **San Diego** in the evening of the sixteenth day.

THURSDAY AND FRIDAY, SEVENTEENTH AND EIGHTEENTH DAYS. At **Los Angeles**, the metropolis of Southern California. Arrive in the morning of the seventeenth day and transfer to Hotel Clark (new and all rooms with bath), or other excellent hotel. We shall take the **Balloon Route Trip** to many cities and beaches, and go to **Pasadena** and the **San Gabriel Mission**, to witness one of the two great religious dramatic spectacles of the world, the **California Mission Play**. Those who

have seen the preliminary presentations do not hesitate to call this impressive presentation with its beautiful natural setting the **Oberammergau of America**.

SATURDAY, NINETEENTH DAY. At **Santa Barbara**, on the **California Riviera**, leaving Los Angeles in the morning and arriving at **Santa Barbara** in the late forenoon. Lunch and dinner furnished at the palatial **Potter Hotel**. Carriage drive to the fine old **Santa Barbara Mission** and along the **Boulevard to Montecito** and **Miramar**. Leave **Santa Barbara** in the evening.

NORTHERN CALIFORNIA

SUNDAY, TWENTIETH DAY. At **Del Monte**, arriving in the morning. Breakfast and lunch furnished at the magnificent **Hotel del Monte** and automobile trip over the famous **Boulevard Drive** along the shore of **Monterey Bay**. Leave **Del Monte** in the afternoon and arrive at San Francisco in the evening. Transfer to the splendid **Hotel Granada** (or other excellent hotel).

MONDAY TO SATURDAY, TWENTY-FIRST TO TWENTY-SIXTH DAYS. In **San Francisco**, with its countless attractions. Five admissions furnished to the great **Panama-Pacific Exposition**; an automobile sight-seeing trip to **Golden Gate Park** and the **Cliff House**; and a trip to the top of Mount

THE PILGRIM TOURS

Tamalpais, the "Righi of the West," by the "Crookedest Railroad in the World." Leave **San Francisco** in the evening of the twenty-sixth day by the Southern Pacific Railroad, "Shasta Route," the "Road of a Thousand Wonders."

SUNDAY, TWENTY-SEVENTH DAY. En route through some of the most inspiring scenery on the Pacific Coast, passing **Mt. Shasta** and the **Siskiyou Mountains** by daylight.

MONDAY, TWENTY-EIGHTH DAY. At **Portland, Oregon**, the "City of Roses," arriving in the morning and leaving in the evening. Meals and sightseeing trip included, with views of the incomparably beautiful mountain peaks of the **Cascade Range**, including **Mt. Hood**. Leave **Portland** in the evening.

TUESDAY, TWENTY-NINTH DAY. At **Seattle, Washington**, arriving in the morning. Meals and lodging furnished and ample time to see this great metropolis of the Pacific Northwest from which we have a splendid view of **Mt. Rainier**.

WEDNESDAY, THIRTIETH DAY. Steamer trip through the magnificent scenery of **Puget Sound**, with everchanging views of the forest clad slopes of the **Olympic Mountains**. Leave **Seattle** in the morning and arrive at **Victoria**, the capital of **British Columbia**, in the early afternoon. There will be time here to go ashore and view this attrac-

tive city which is located on the southern extremity of **Vancouver Island**. Resume the voyage, through the island studded waters of the **Gulf of Georgia**, and arrive at **Vancouver** in the early evening. Transfer to hotel. Meals and lodging furnished.

THURSDAY, THIRTY-FIRST DAY. At **Vancouver**, the great port of Western Canada, and one of the main stations on the highway of the British Empire round the world. Leave **Vancouver** in the afternoon by the Canadian Pacific Railway for the most wonderful five hundred miles of continuous mountain scenery to be seen from any railroad in the world. Traverse the beautiful **Fraser River Canyon** by daylight.

FRIDAY, THIRTY-SECOND DAY. At **Glacier**, in the heart of the glorious **Selkirk Mountains**, arriving in the forenoon. Meals and lodging furnished at **Glacier House**. There will be ample opportunity to visit the stupendous **Illecillewaet Glacier**, which covers an area of over thirty-five square miles.

SATURDAY, THIRTY-THIRD DAY. Leave **Glacier** in the forenoon and spend the next seven hours en route through the most glorious stretch of mountain scenery in the world. The train proceeds slowly past the giant peaks of the **Selkirk Range**, through **Kicking Horse Pass**, and up into snows and solitudes of the **Canadian Rockies** and over the "Great

CALIFORNIA IN 1915

Divide." Arrive at **Lake Louise** in the late afternoon. Transfer to the "Chalet." Meals and lodging furnished.

SUNDAY, THIRTY-FOURTH DAY. At **Lake Louise**, one of the three beautiful Lakes in the Clouds, surrounded by noble mountains and glaciers that form the crest of the continent.

MONDAY, THIRTY-FIFTH DAY. At **Banff**, the famous summer resort, arriving in the morning after an hour's run from **Lake Louise**. Meals furnished at the fine Banff Spring Hotel. There will be opportunity here for walks and drives through some of the most interesting parts of the great **Rocky Mountain Park**. Leave **Banff** in the evening.

TUESDAY, THIRTY-SIXTH DAY. En route across the magnificent prairies and wheatlands of Western Canada, "The Bread Basket of the World."

WEDNESDAY, THIRTY-SEVENTH DAY. En route through **Manitoba** and **Minnesota**, arriving at **St. Paul** in the afternoon. Leave **St. Paul** in the late afternoon.

THURSDAY, THIRTY-EIGHTH DAY. At **Chicago**, arriving in the morning, and leaving in the evening, by the New York Central Lines.

FRIDAY, THIRTY-NINTH DAY. At **Niagara Falls**, arriving in the morning. Meals furnished and

remarkable scenic trip down the **Gorge**, past the **Whirlpool** and the **Rapids** and return. Leave **Niagara Falls** in the evening by the New York Central Lines.

SATURDAY, FORTIETH DAY. Arrive at **Boston**, **New York** or **Philadelphia** in the morning.

PILGRIM TOURS

W (June 26), X (July 3), Y (July 10), Z (July 31), Z₂ (August 14), Z₃ (September 4), Z₄ (September 18), Z₅ (October 2), Z₆ (October 18)

Twenty-Eight Days From New York Price \$285
For other rates see page 10

DEPARTURES: SATURDAYS, JUNE 26, JULY 3, 10, AND 31, AUGUST 14, SEPTEMBER 4, 18, OCTOBER 2 AND 16

SATURDAY, FIRST DAY. Leave **Boston** and **New York** (by New York Central Lines) or **Philadelphia** by afternoon train in first-class standard Pullman sleeping cars.

SUNDAY, SECOND DAY. Arrive in **Chicago** on the evening and leave by the Northwestern and Union Pacific Route.

MONDAY, THIRD DAY. En route across the **Nebraska Prairies**.

TUESDAY, FOURTH DAY. At **Denver**, a mile above the sea. Arrive in the morning and transfer to hotel.

THE PILGRIM TOURS

Meals and lodging furnished and beautiful sight-seeing trip through the city and parks.

WEDNESDAY AND THURSDAY, FIFTH AND SIXTH DAYS. Leave **Denver** in the morning of the fifth day, arriving at **Colorado Springs** about noon. Transfer to **Cliff House** at **Manitou**. All meals and lodging furnished and carriage drive through the fantastic **Garden of the Gods**, with its natural wonders and superb views of **Pike's Peak**.

FRIDAY, SEVENTH DAY. En route across the Rocky Mountains, leaving **Manitou** in the morning, by Denver & Rio Grande Railroad, and passing through the thrilling and world-famed **Royal Gorge**, the Canyon of the Arkansas River.

SATURDAY, EIGHTH DAY. Arrive at **Salt Lake City, Utah**, about noon. Lunch furnished and a carriage drive about this interesting oasis city. Leave **Salt Lake City** in the afternoon by Southern Pacific Line.

SUNDAY, NINTH DAY. En route across **Nevada** and **California**, arriving at **San Francisco** in the evening. Transfer to the Hotel Granada.

NORTHERN CALIFORNIA

MONDAY TO FRIDAY, TENTH TO FOURTEENTH DAYS. In **San Francisco** with its countless attractions. Five admissions furnished to the great **Panama-**

Pacific Exposition; an automobile sightseeing trip to **Golden Gate Park** and the **Cliff House** and a trip to the top of **Mount Tamalpais**, the "Right of the West," by the "Crookedest Railway in the World."

SATURDAY, FIFTEENTH DAY. At **Del Monte**, leaving **San Francisco** in the morning by the Southern Pacific Railroad, arriving at **Del Monte** about noon. Lunch and dinner furnished at the magnificent Hotel Del Monte, and automobile trip over the famous **Seventeen Mile Drive** along the shore of **Monterey Bay**. Leave **Del Monte** in the evening.

SOUTHERN CALIFORNIA

SUNDAY, SIXTEENTH DAY. At **Santa Barbara** on the California Riviera. Arrive in the morning. Breakfast and lunch furnished at the Palatial Potter Hotel. Carriage drive to the fine old **Santa Barbara Mission** and along the **Boulevard** to **Montecito** and **Miramar**. Leave **Santa Barbara** in the afternoon and arrive at **Los Angeles** in the evening. Transfer to Clarke's Hotel (new and all rooms with bath) or other excellent hotel.

MONDAY AND TUESDAY, SEVENTEENTH AND EIGHTEENTH DAYS. At **Los Angeles**, the metropolis of **Southern California**. We shall take the so-called **Balloon Route Trip** taking in ten beaches and eight cities,

CALIFORNIA IN 1915

while one of the outstanding features of the entire tour will be one excursion to **Pasadena** and the **San Gabriel Mission** to witness the remarkable **Mission Play**, well called, with its surroundings, the **Oberammergau of America**. The preliminary presentations have produced a profound impression on all who have been privileged to witness them and a great emotional experience may be anticipated with confidence. Leave **Los Angeles** in the evening.

WEDNESDAY TO FRIDAY, NINETEENTH TO TWENTY-FIRST DAYS. At **San Diego**, the southernmost city of **California**, beautifully situated on the blue waters of the Pacific Ocean. Arrive at San Diego in the morning of the nineteenth day and transfer to the New Hotel San Diego (or other excellent hotel). Three admissions to the remarkable **Panama-California Exposition** and an automobile trip to beautiful **Point Loma**. Leave **San Diego** in the evening of the twenty-first day.

SATURDAY, TWENTY-SECOND DAY. At charming **Riverside**, arriving in the morning. Breakfast and lunch furnished at the famous **Glenwood Mission Inn**, and an automobile ride through orange groves and up **Mount Rubidoux**, with magnificent views of Southern California and the snowy **Sierras**. Leave **Riverside** in the late afternoon by the Santa Fe Railroad.

SUNDAY, TWENTY-THIRD DAY. En route through **California** and **Arizona**.

MONDAY, TWENTY-FOURTH DAY. At the **Grand Canyon of Arizona**, one of the show places of the earth—a stupendous panorama of form and color. Arrive in the morning and lunch and dinner furnished at the fine Hotel El Tovar, on the brink of the **Canyon**. Leave **Grand Canyon** in the evening.

TUESDAY, TWENTY-FIFTH DAY. Eastbound across the high plateau land of **Northern Arizona** and **New Mexico**, a vast plain, higher in many places than Mt. Washington. In the afternoon stop long enough at **Albuquerque, New Mexico**, to enjoy the famous Fred Harvey Indian Museum.

WEDNESDAY, TWENTY-SIXTH DAY. En route through the rolling wheat lands of **Kansas**.

THURSDAY, TWENTY-SEVENTH DAY. Arrive at **Chicago** in the morning. Leave **Chicago** in the morning by the New York Central Lines.

FRIDAY, TWENTY-EIGHTH DAY. Arrive at **Boston** in the early afternoon at **New York** and **Philadelphia** about noon.

You know Raymond & Whitcomb
They know California

THE PILGRIM TOURS

THE LAND OF HEART'S DESIRE

From "California, Its History and Romance"

BY JOHN STEVEN MCGROARTY, AUTHOR OF
THE CALIFORNIA MISSION PLAY

The poet's dreams—ages old—of a "Land of Heart's Desire" have been realized in the actual discovery of that earthly Paradise. It is certainly California

THERE is no other land so lovely, so constant, so generous. It lies between the desert and the sea—God's two sanatoriums for weary flesh and weary mind. The Sierra's eternal snows, the desert's clean, hot breath, the Ocean's cool winds and the warmth of the sinuous current of Japan winding through it all combine to make a climate hopelessly unrivaled by even the most favored shores of the Mediterranean. It is a land of artists' dreams, endless with flower-flamed uplands, swinging lomas and majestic mountains. It changes with every color of the day and is soft and sweet unspeakably under low-hanging stars and great, shining moons.

THERE is not anywhere a Valley to rival the beauty of Yosemite, or the fruitful area of the San Joaquin; the most splendid harbor in the world is the Bay of San Francisco; the Mariposa Sequoias are the largest trees in existence as they are also the oldest living things on the face of the earth. Never was there a road more glamorous with romance or more eloquent with service than El Camino Real on which still linger the gray ruins of the old Franciscan Missions. Southward wind still the brown trails of the Padres, northward are the hills from which the Argonauts wrung the most stupendous cache of gold that Nature had ever hidden away.

IF you were to spend a year of happy wanderings between San Diego's harbor of the sun and the Valley of the Seven Moons, and then another summer still till you reach the trails that lie under Shasta across the Hills of Del Norte, Modoc and Siskiyou, then would you know with what tenderness God has fashioned California. Always from the Wander Trail would your eyes behold the glory of the sea, the soft purple of dreamy isles, sun and shine to light your feet by day and the wonder of the stars to cover you at night.

CALIFORNIA IN 1915

Raymond-Whitcomb Tours

California in 1915

"Land Cruises"

All arrangements on the Highest Travel Plane

Exceptional Itineraries

Including many unusual and fascinating places

\$490 to \$1125

Japan and China

Cherry Blossom Tours

Under the American flag

February 6, 27 and March 27

Florida : Cuba : Nassau and Panama

Delightful tours leaving

January 28, February 2, 4, 10, 17, 22
and March 3 and 5

Mention by Name the Itinerary Desired

The Pilgrim Tours

First Class Tours at

Moderate Prices

to

Florida and Cuba

Departures in February

::

Summer Vacation Trips

to

Japan

About Two Months

From San Francisco

back to San Francisco

California 1915 and Japan
A Memorable Vacation

Mention by Name the Itinerary Desired

THE MISSION PLAY
BY
JOHN STEVEN MCGROARTY

PERMANENT PLAYHOUSE
AT SAN GABRIEL MISSION
SAN GABRIEL CAL.



#409 Equitable Bldg.

Los Angeles, Cal.

Aug. 5, 1914.

Raymond & Whitcomb Co,
300 Washington St.,
Boston, Mass.

Gentlemen:

You have been this day appointed to act
for us with the official title of :
"GENERAL TOURIST REPRESENTATIVES/THE
CALIFORNIA MISSION PLAY".

We trust, and are entirely confident
that our relations will be mutually pleasant and
profitable.

Assuring you of our high regard and
confidence, we beg to remain

Faithfully yours,

MISSION PLAY ASSOCIATION

By

John S. McGroarty
President.



EXECUTIVE OFFICES

San Diego,
California,
March thirteenth,
Nineteen-fourteen.

Raymond & Whitcomb Co.,
Boston,
Mass.

Gentlemen:

It gives me pleasure to notify you that,
through the action of the Executive Committee, you have
been appointed "Official Tourist Representatives" for
the San Diego Exposition.

Very truly yours,

A handwritten signature in cursive script that reads "A. O. Davis".

Director-General.

THE PILGRIM TOURS

FOR

CALIFORNIA IN 1915

RAYMOND & WHITCOMB COMPANY

Directors

BOSTON

300 Washington Street
17 Temple Place

PHILADELPHIA

1005 Chestnut Street

LOS ANGELES

509 South Spring Street

NEW YORK

225 Fifth Avenue
Brunswick Building

CHICAGO

632 South Michigan Boulevard

SAN DIEGO

American National Bank

SAN FRANCISCO

397 Monadnock Building