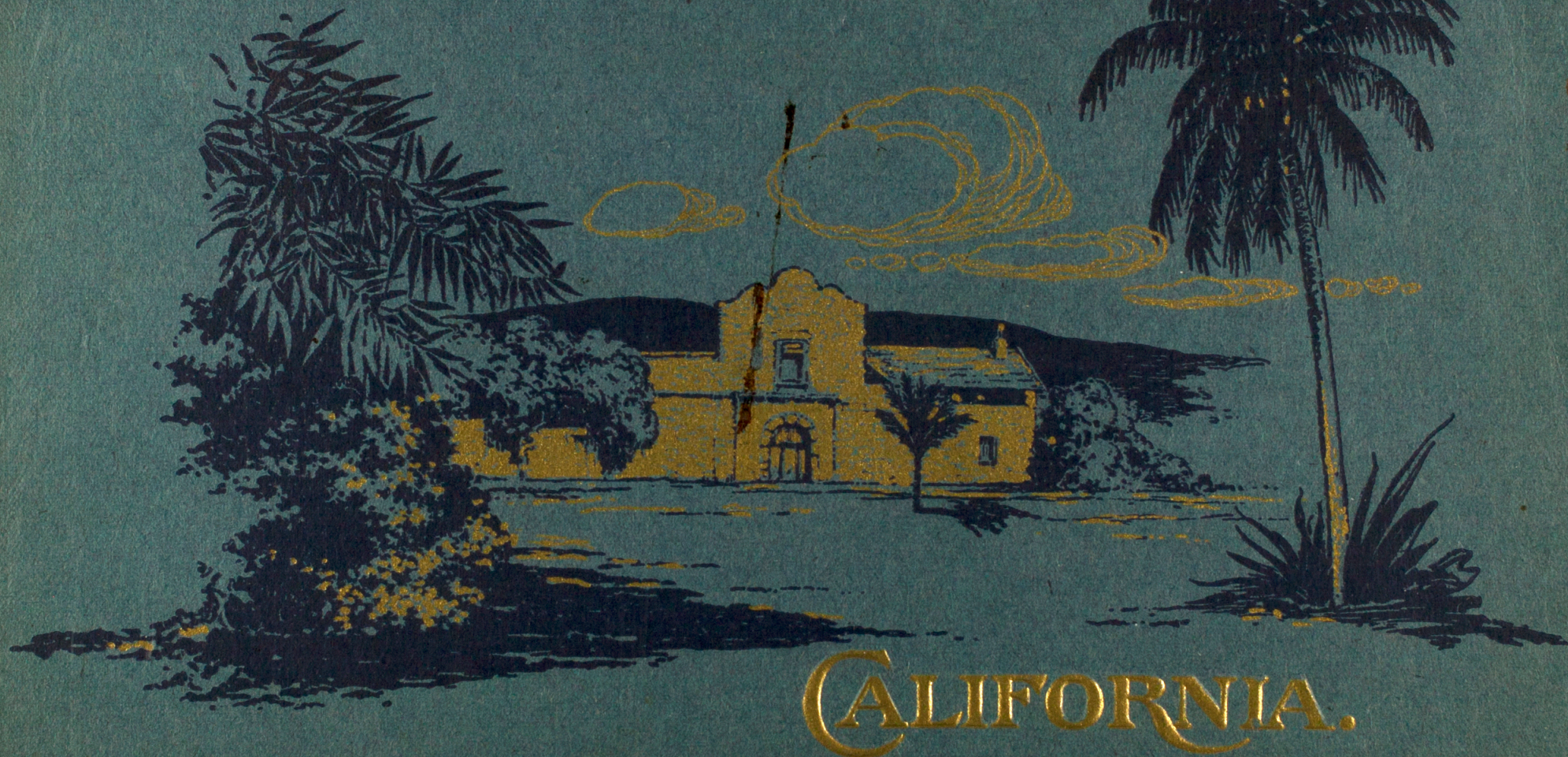


San Diego

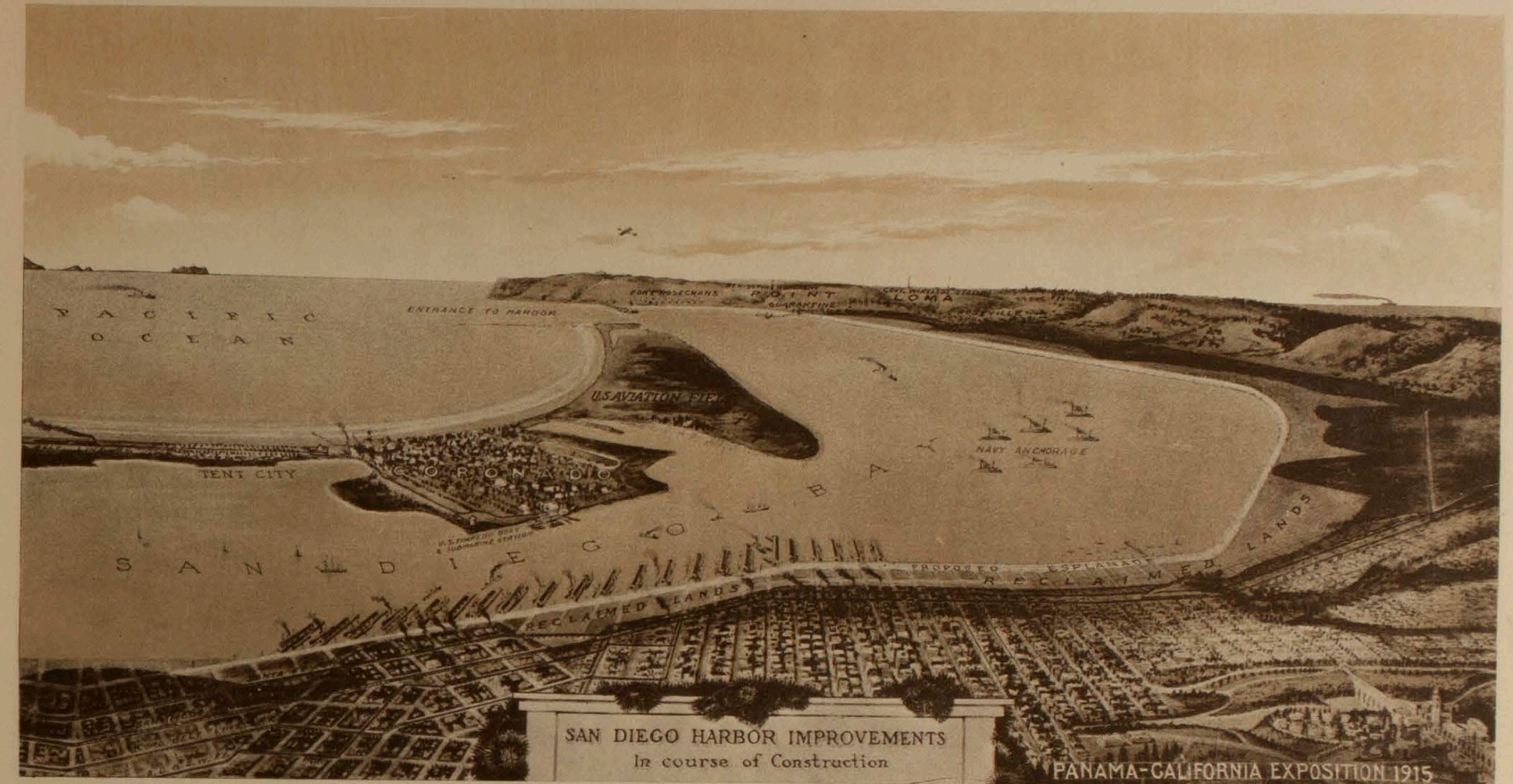
AND VICINITY.



CALIFORNIA.

SAN DIEGO AND VICINITY, CALIFORNIA.

\$ 22.75



San Diego is the oldest city in California, and one of the most progressive. Cabrillo sailed into the Harbor in 1542. In 1769 Father Junipero Serra founded the first of the twenty-three California Missions. Mission "De Alcala" situated about six miles from the present city, which was established as the new town in 1867. The land-locked harbor of San Diego Bay covers an area of twenty-two square miles and on the slope that rises from the water front the city of San Diego is spread out. The population is rapidly approaching 100,000. The city has broad well-lighted business streets, and as fine Public Buildings, Hotels and Private Residences as those of any eastern city twice the size. The magnificent U. S. Grant Hotel facing the Plaza was erected at a cost of nearly two million dollars, and is in the heart of the business district. Hotel Del Coronado at Coronado Beach is one of the most beautiful on the coast and is renowned the World over.

The Points of interest around the city are numerous, among the most prominent are La Jolla with its fine Surf and natural caves. Fort Rosencrans over the new boulevard, Point Loma, the old lighthouse on Ocean Beach. Tia Juana, the quaint Mexican village ten miles south of the city. Coronado Beach and Tent City. At old Town there is the Marriage Place of Ramona, the Mission Palm, the Serra Cross, and around the city there is the Mission Cliff Gardens, the Ostrich Farm and Beautiful Balboa Park, a tract of 1,400 acres and here is located the Panama-California Exposition, which will be open from January 1st to December 31st, 1915, one full year, the favorable climatic conditions making this possible.



U. S. Grant Hotel, facing Plaza Park. Constructed at a cost of \$2,000,000. Erected by U. S. Grant, Jr. as a memento to his father General U. S. Grant.



Electric Fountain in Plaza Park, facing the U. S. Grant Hotel, donated to the city by Louis J. Wilde.



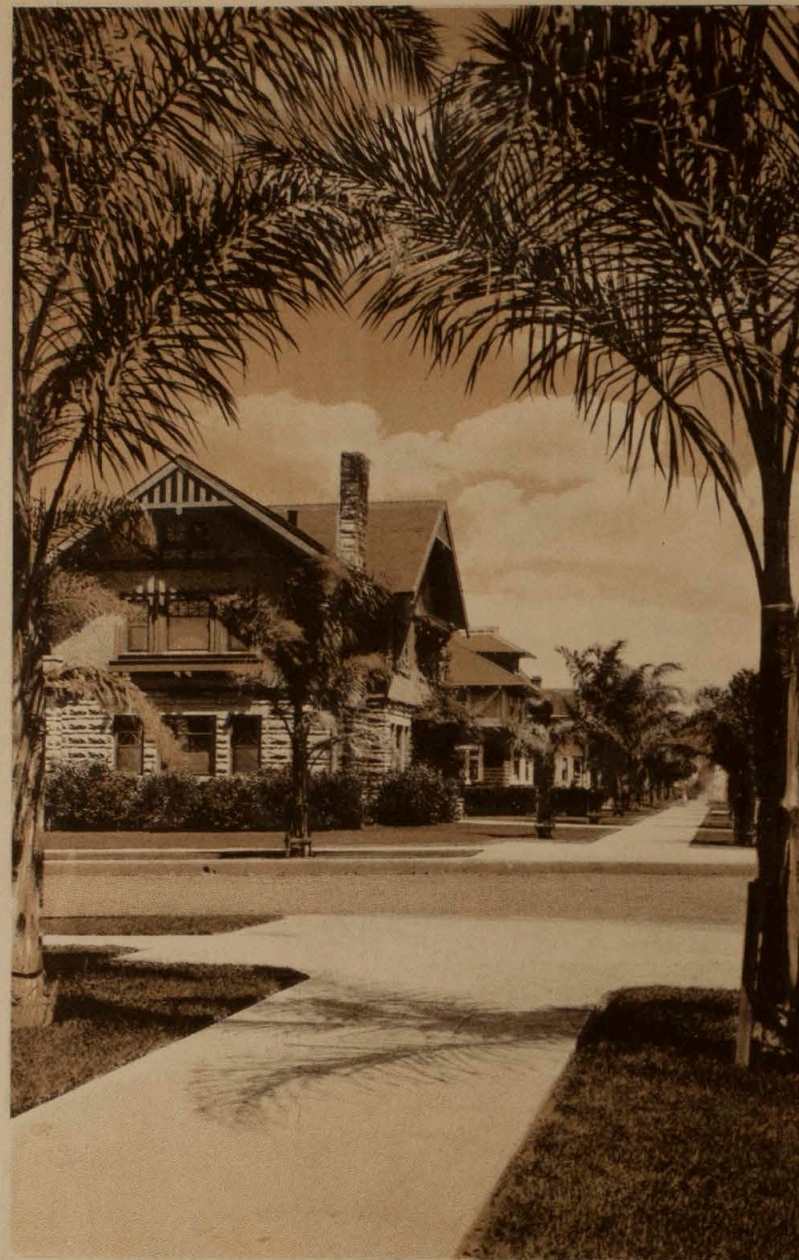
State Normal School, situated on University Heights overlooking the city.



U. S. Post Office and Custom House. The departments of Customs and Immigration, also the Federal Court and Weather Bureau are located in this building which was recently completed at a cost of \$300,000.



American National Bank Building.



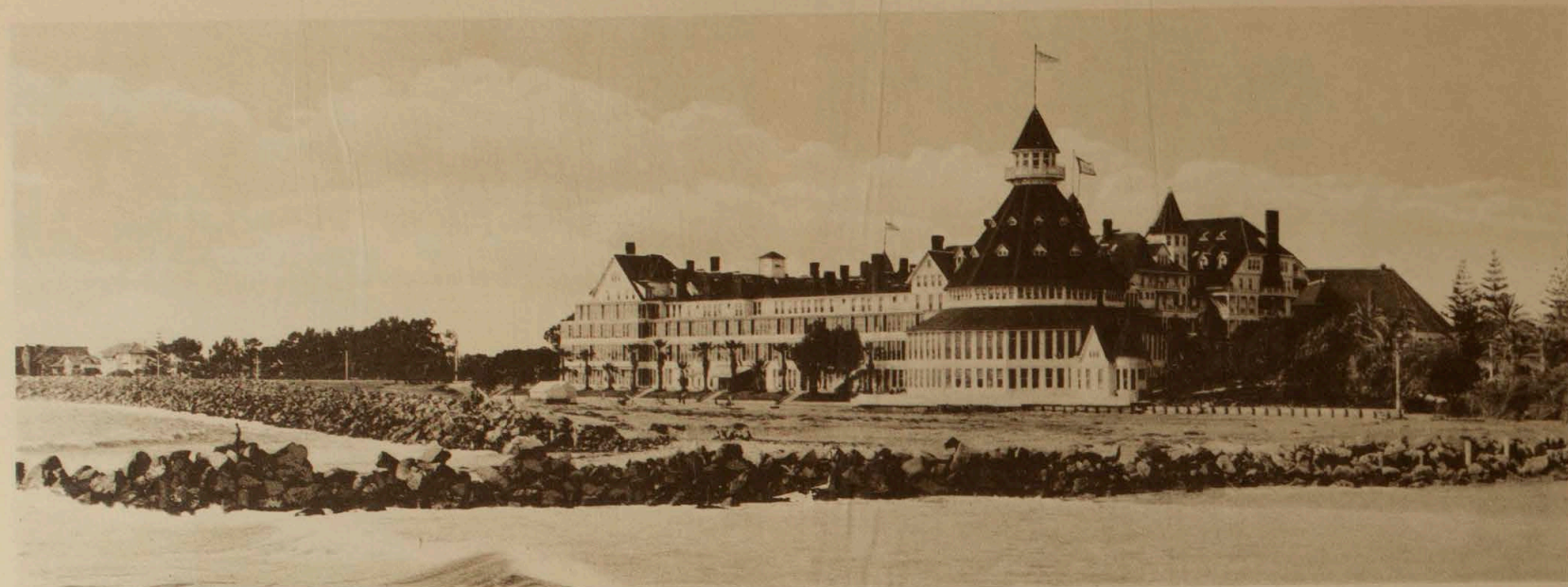
Typical Residential Street Scene showing beautiful homes among the Palms and tropical foliage.



Pavilion and Fountain in Mission Cliff Gardens.



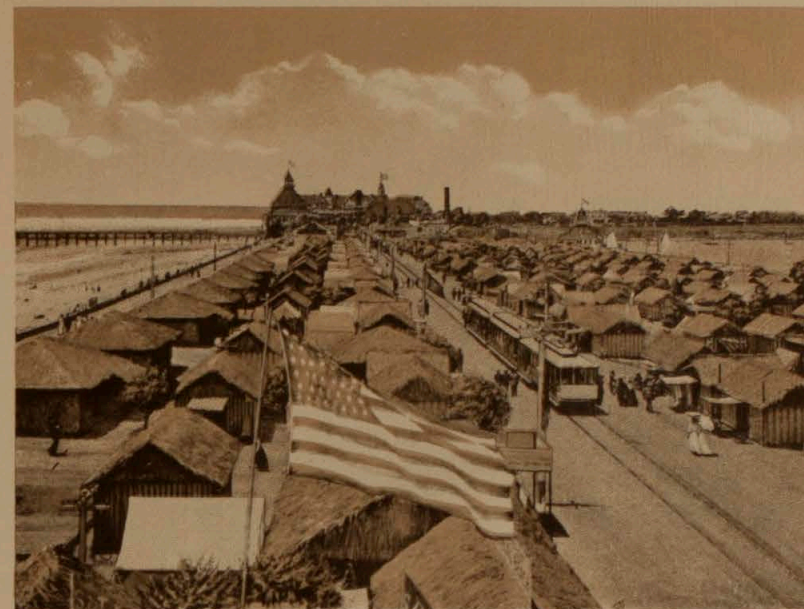
Scene in Beautiful Balboa Park.



Hotel Del Coronado, Coronado, San Diego. One of the most beautiful hotels on the coast, erected at a cost of one and one-half million dollars.



Residence of John D. Spreckels, Coronado, San Diego.



Tent City, Coronado Beach.



Swimming Pool and \$30,000 Dancing Pavilion, Coronado Beach.



Boat Landing, Tent City, Coronado Beach.



Boat Racing, Tent City, Coronado Beach.



Mission San Diego "De Alcala," 1769. First Mission in Southern California founded by Father Junipero Serra.



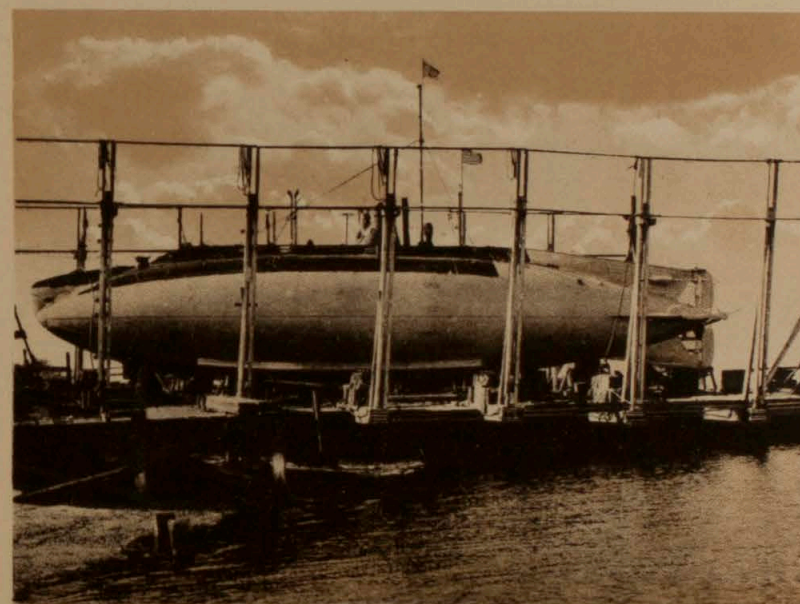
Surf at Coronado Beach, Point Loma in the distance, San Diego.



Scene at Ocean Beach, near San Diego.



Lake Side, near San Diego.



Submarine in Dry Dock, San Diego.



Torpedo Boat St. Lawrence, San Diego Harbor.



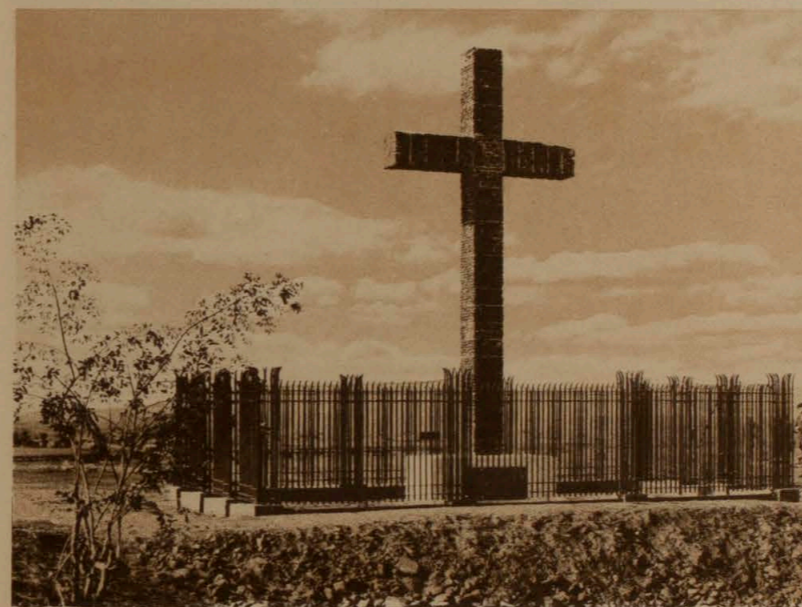
Breakers dashing over cliffs at La Jolla, near San Diego.



Caves at La Jolla, near San Diego.



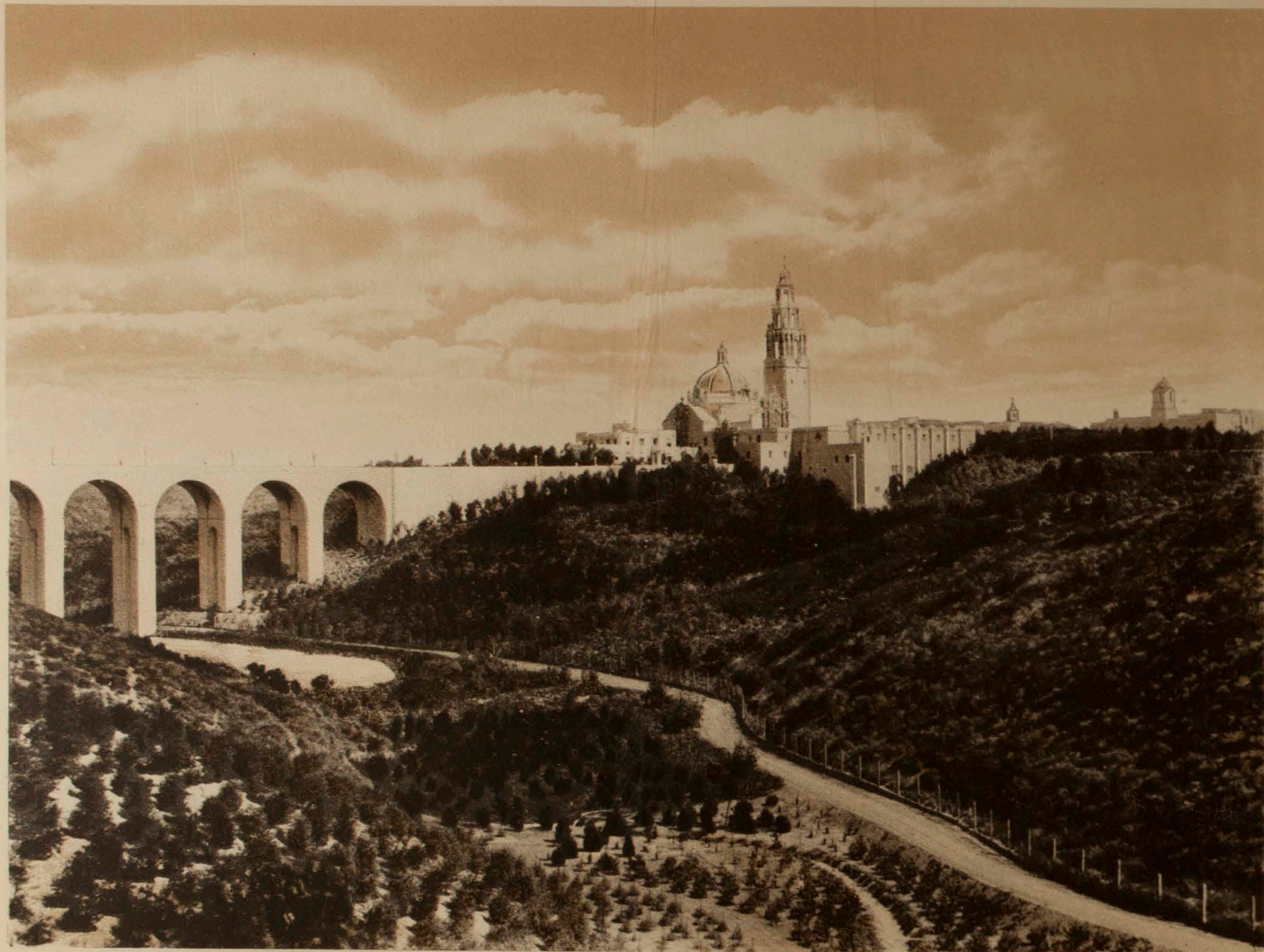
Ramona's Home, Old Town, San Diego.



Fray Junipero Monument, Old Town, San Diego.



Turtle Rock, La Jolla, near San Diego.



Puente Cabrillo across Canyon, West approach to the Panama-California Exposition.



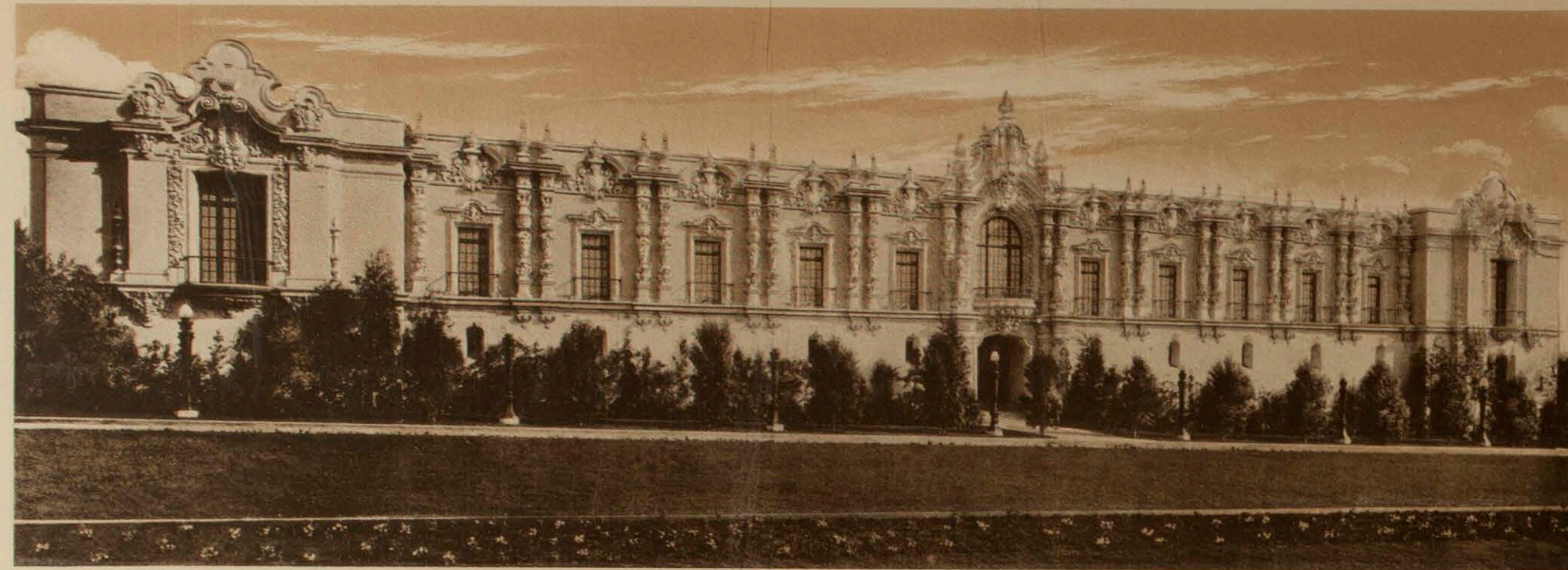
West Gate to Panama-California Exposition showing Tower and Dome of California Building.



The Botanical Gardens showing Botanical Building on the left and Varied Industries Building in the Center,
Panama-California Exposition.



Reflections in the large Lagoon, Panama-California Exposition.



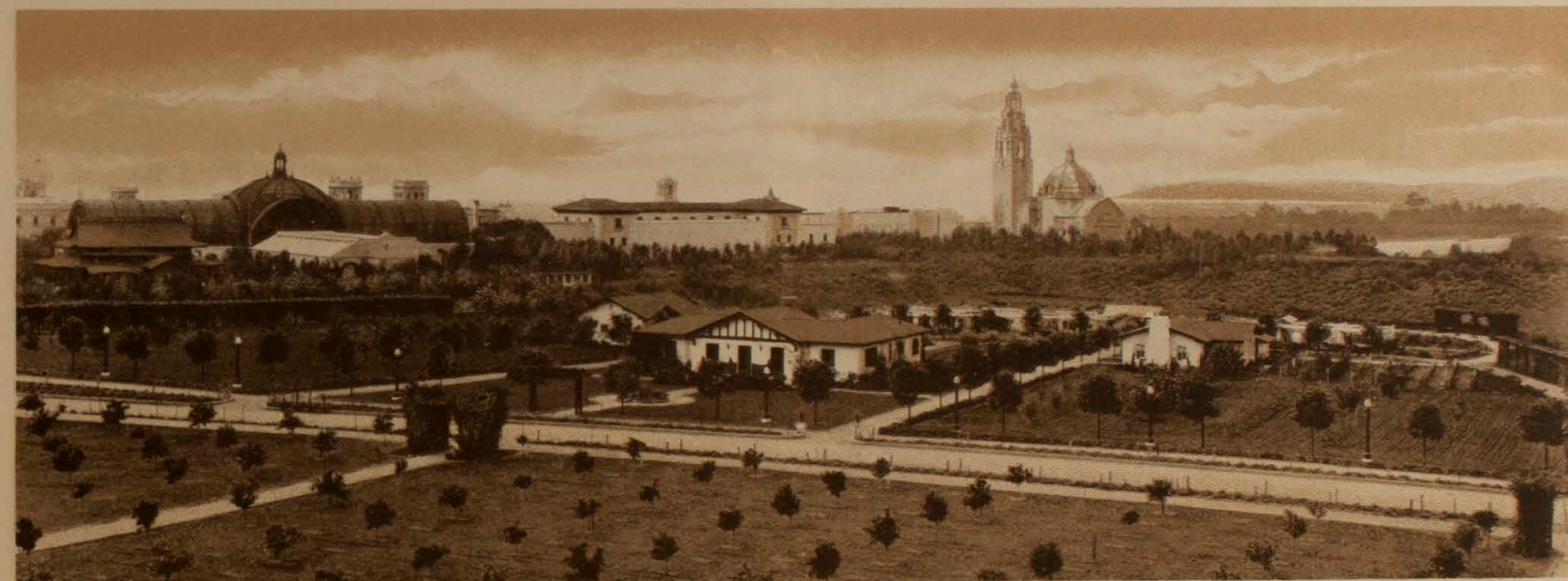
San Joaquin Counties Building, Panama-California Exposition.



Southern California Counties Building, Panama-California Exposition.



Botanical Building and Reflection in Lagoon, Panama-California Exposition.



The Model Farm, Panama-California Exposition.



East Facade, Arts and Crafts Building, Panama-California Exposition.



East Portal, Varied Industries Building, Panama-California Exposition.



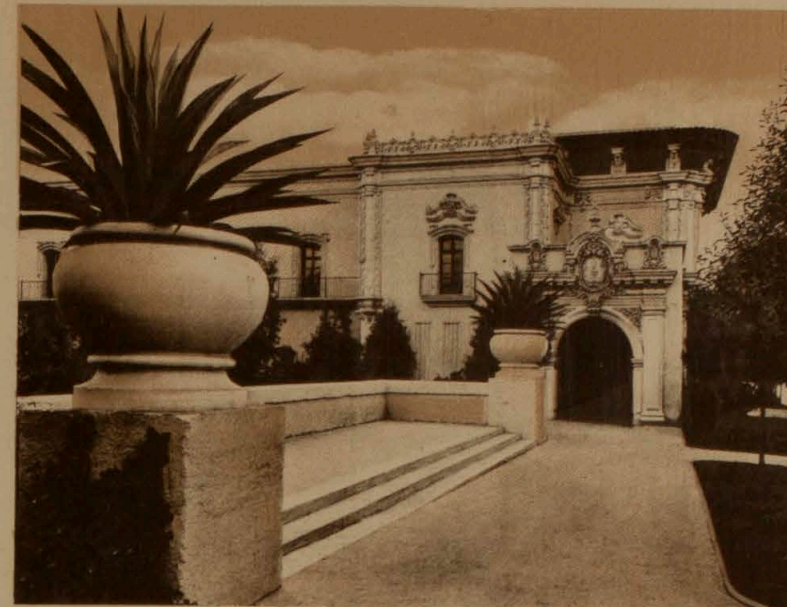
Patio of Southern California Counties Building, Panama-California Exposition.



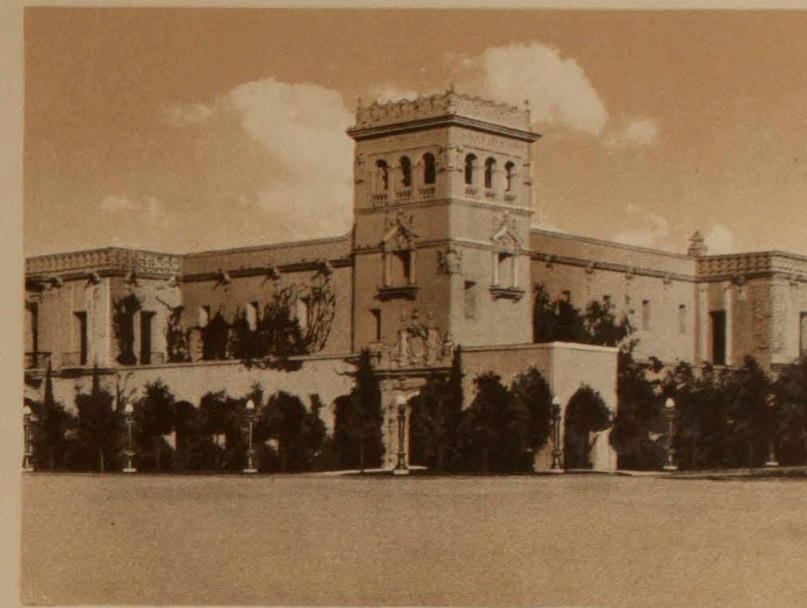
Rear View of California Building, Panama-California Exposition.



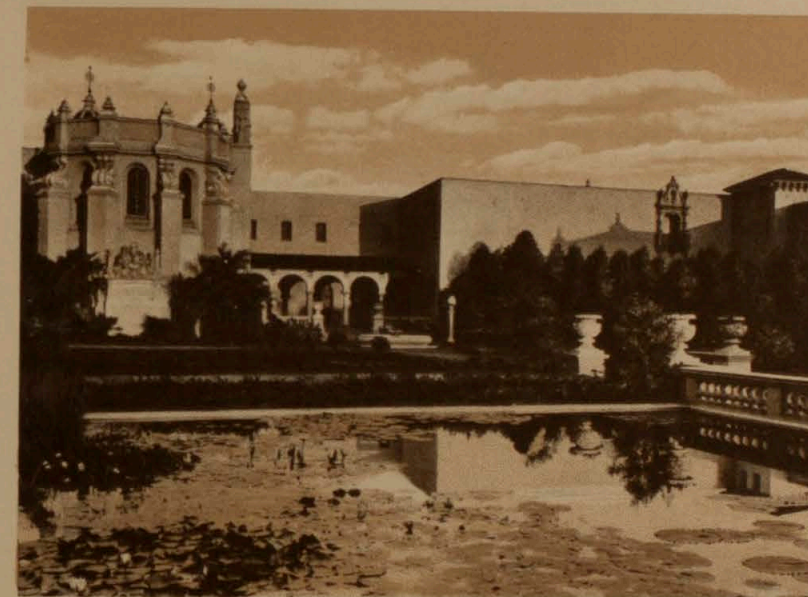
Vista of Arts and Crafts Building, Panama-California Exposition.



Vista of Commerce and Industries Building.



Home Economy Building.



Lily Pond and Varied Industries Building.



Ethnology Building and the Dome and Tower of California Building.



Del Prado (Main Promenade) showing West Gate and California Building, Panama-California Exposition.

