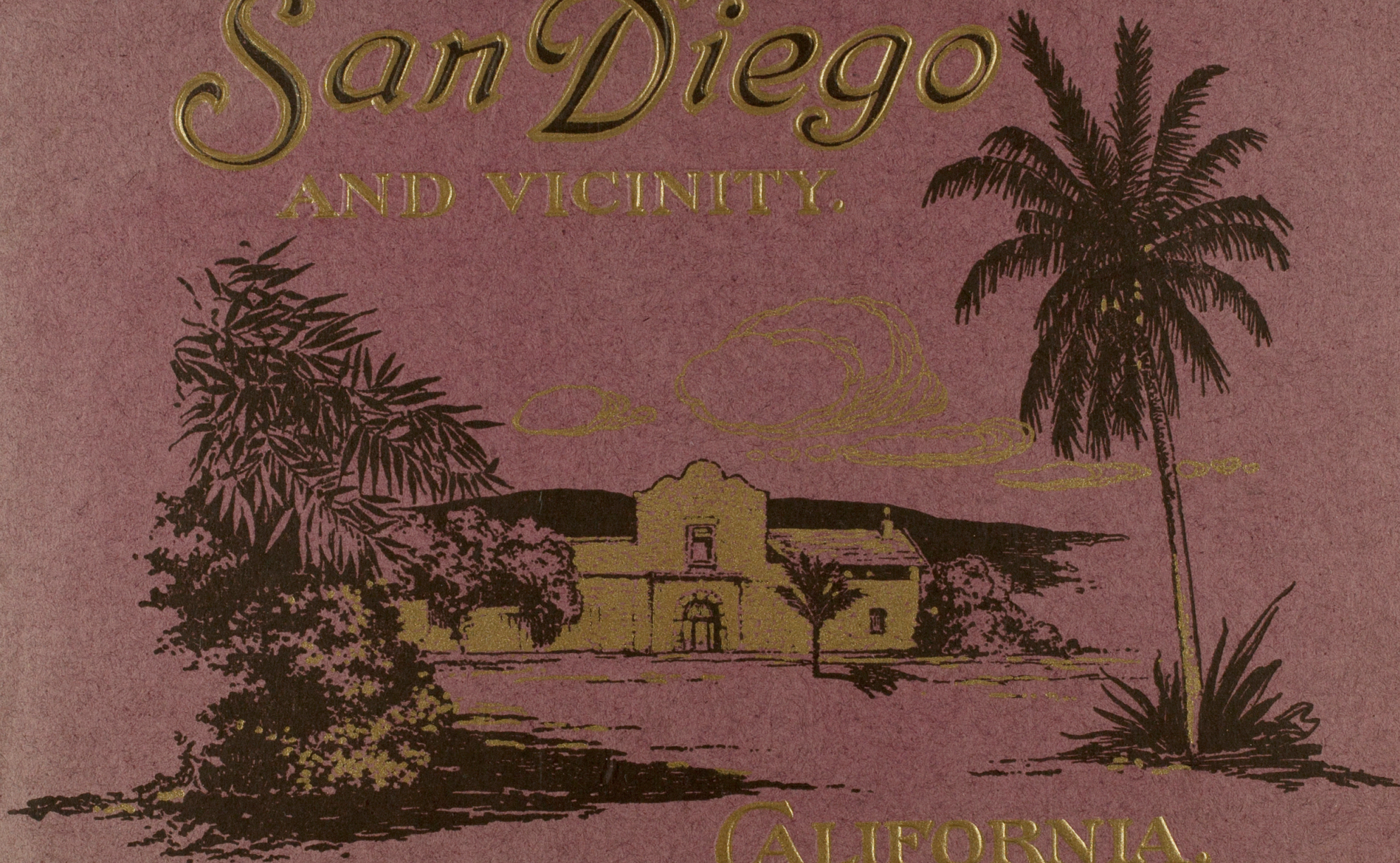


# San Diego

AND VICINITY.



CALIFORNIA.



San Diego  
and vicinity

San Diego

# SAN DIEGO AND VICINITY, CALIFORNIA.



San Diego is the oldest city in California, and one of the most progressive. Cabrillo sailed into the Harbor in 1542. In 1769 Father Junipero Serra founded the first of the twenty-three California Missions Mission "De Alcalá" situated about six miles from the present city which was established as the new town in 1867. The land-locked harbor of San Diego Bay covers an area of twenty-two square miles and on the slope that rises from the water front the city of San Diego is spread out. The population is rapidly approaching 100,000. The city has broad well-lighted business streets, and as fine Public Buildings, Hotels and Private Residences as those of any eastern city twice the size. The magnificent U. S. Grant Hotel facing the Plaza was erected at a cost of nearly two million dollars, and is in the heart of the business district. Hotel Del Coronado at Coronado Beach is one of the most beautiful on the coast and is renowned the World over.

The Points of interest around the city are numerous, among the most prominent are La Jolla with its fine Surf and natural caves. Fort Rosencrans over the new boulevard, Point Loma, the old lighthouse on Ocean Beach. Tia Juana, the quaint Mexican village ten miles south of the city. Coronado Beach and Tent City. At old Town there is the Marriage Place of Ramona, the Mission Palm, the Serra Cross, and around the city there is the Mission Cliff Gardens, the Ostrich Farm and Beautiful Balboa Park, a tract of 1,400 acres and here is located the Panama-California Exposition, which will be open from January 1st to December 31st, 1915, one full year, the favorable climatic conditions making this possible.







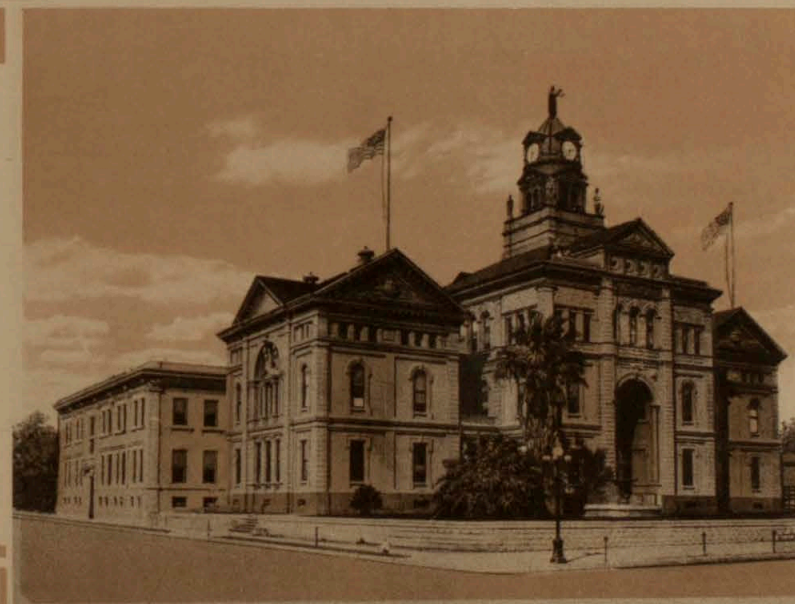
U. S. Grant Hotel, facing Plaza Park. Constructed at a cost of \$2,000,000. Erected by U. S. Grant, Jr. as a memento to his father General U. S. Grant.



Santa Fe Railroad Depot.



Los Banos "The Bath House."



County Court House and Hall of Records.



Carnegie Public Library.





State Normal School.



New Municipal Pier.



Spreckels Theatre Building.



U. S. Post Office and Custom House.



MISSION VALLEY, FROM PERGOLA TERRACE, MISSION CLIFF GARDENS.  
The Mission Cliff Gardens are located on the bluffs overlooking the famous Mission valley, where is located the first Mission established in California.





Hotel Del Coronado, Coronado, San Diego. One of the most beautiful hotels on the coast, erected at a cost of one and one-half million dollars.



Tent City, Coronado Beach.

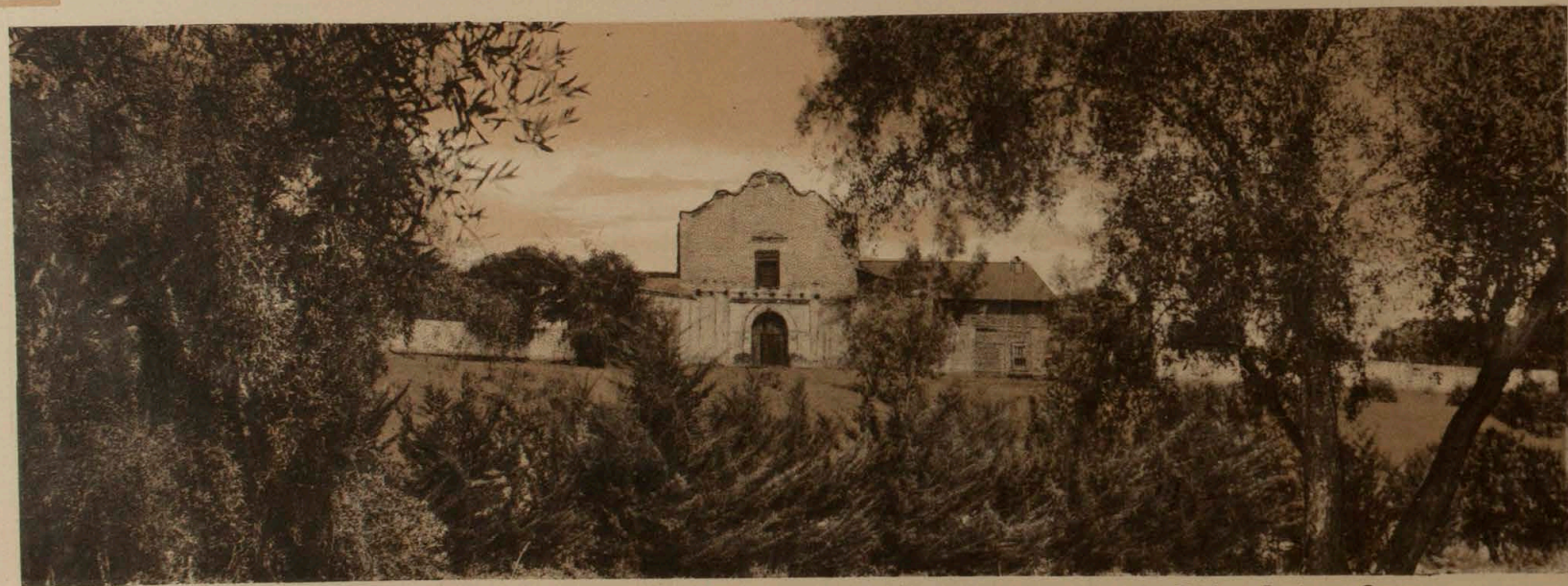


Residence of John D. Spreckels, Coronado, San Diego.





Surf at Coronado Beach, Point Loma in the distance. San Diego.



Mission San Diego, "De Alcala," 1769. First Mission in Southern California founded by Father Junipero Serra.



The San Diego Mission Palm, Old Town.  
Fray Junipero Serra Monument.



Typical Residential Street Scene showing beautiful homes among the palms and tropical foliage.





Sea Gulls and Young Birds, Coronado Islands.



The Breakers at High Tide.



A Surf Scene, Ocean Beach.



Sphinx Head Cave, La Jolla.



Caves at La Jolla, near San Diego.



Ramona's Home, Old Town, San Diego.



Old Spanish Oven at Ramona's Marriage Place, Old Town, San Diego.



Turtle Rock, La Jolla, near San Diego.





West Gate to Panama-California Exposition showing Tower and Dome of California Building.



Del Prado (Main Promenade) showing West Gate and California Building, Panama-California Exposition.

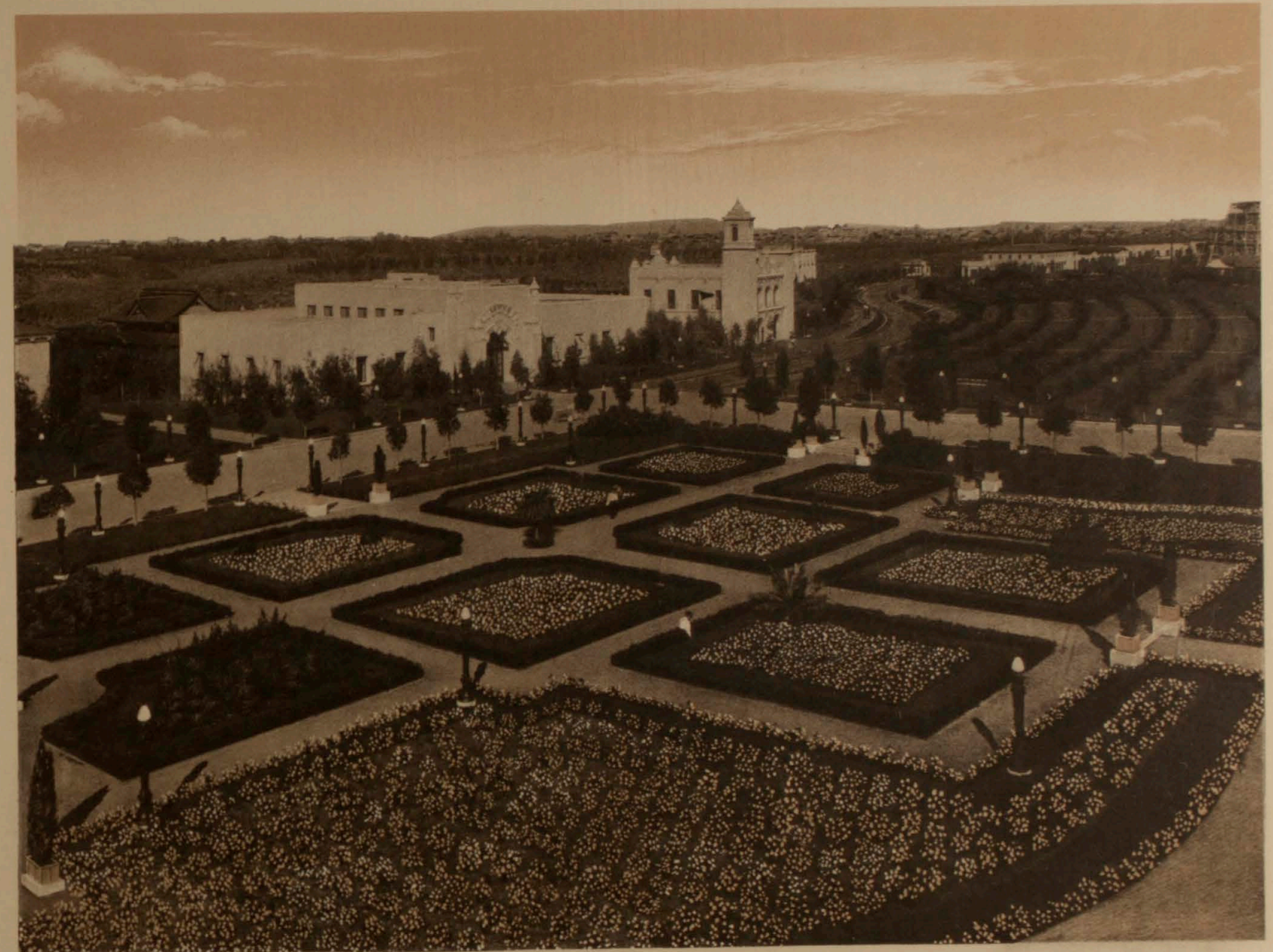


El Prado showing Commerce and Industries Building.





View of Panama-California Exposition from State Buildings Plaza.



Formal Gardens and Citrus Grove from Southern Counties Building.





Feeding the Pigeons.



Patio of Southern California Counties Building, Panama-California Exposition.

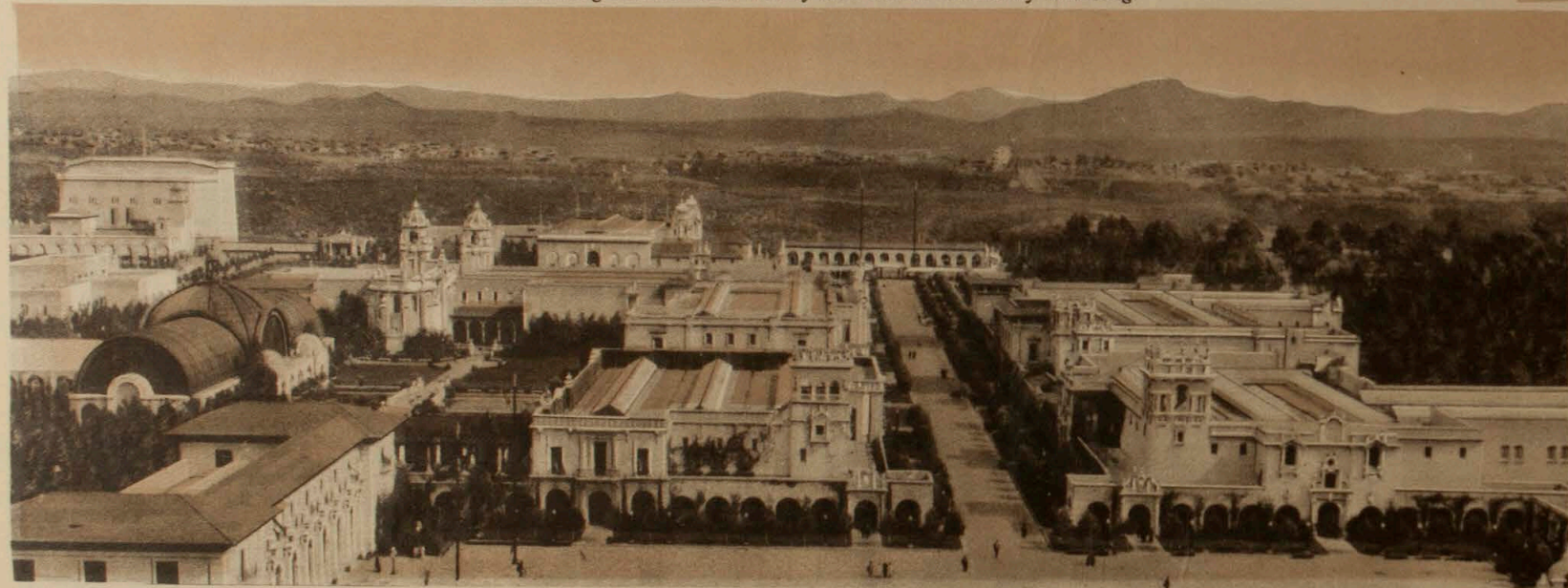


Rear View of California Building, Panama-California Exposition.

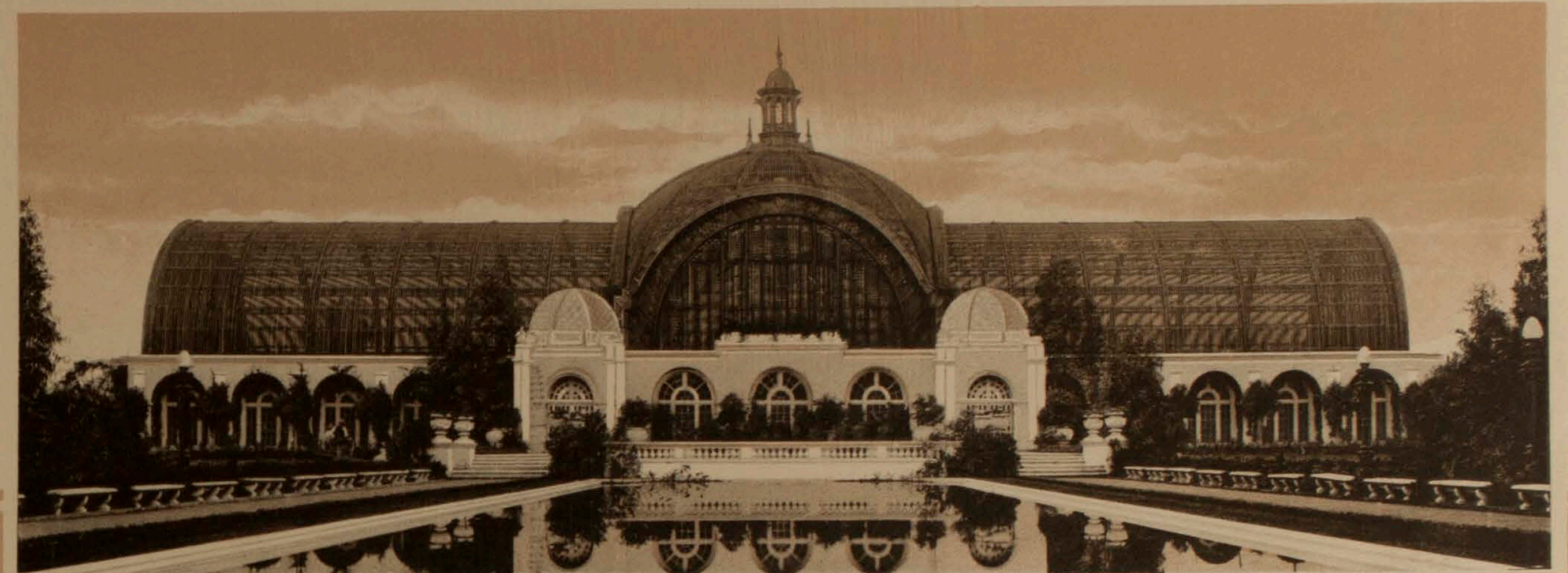




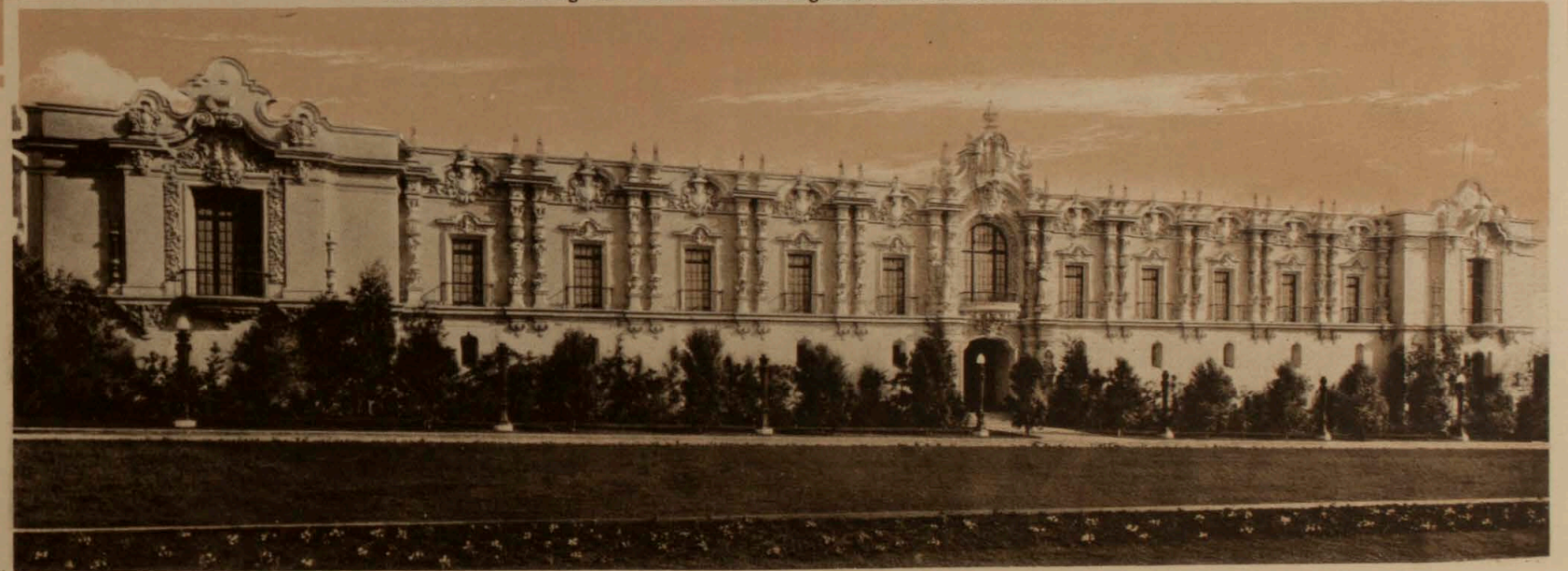
Plaza showing Sacramento Valley and Home Economy Building.



Looking East from Tower of the California Building.



Botanical Building and Reflection in Lagoon, Panama-California Exposition.



San Joaquin Counties Building, Panama-California Exposition.

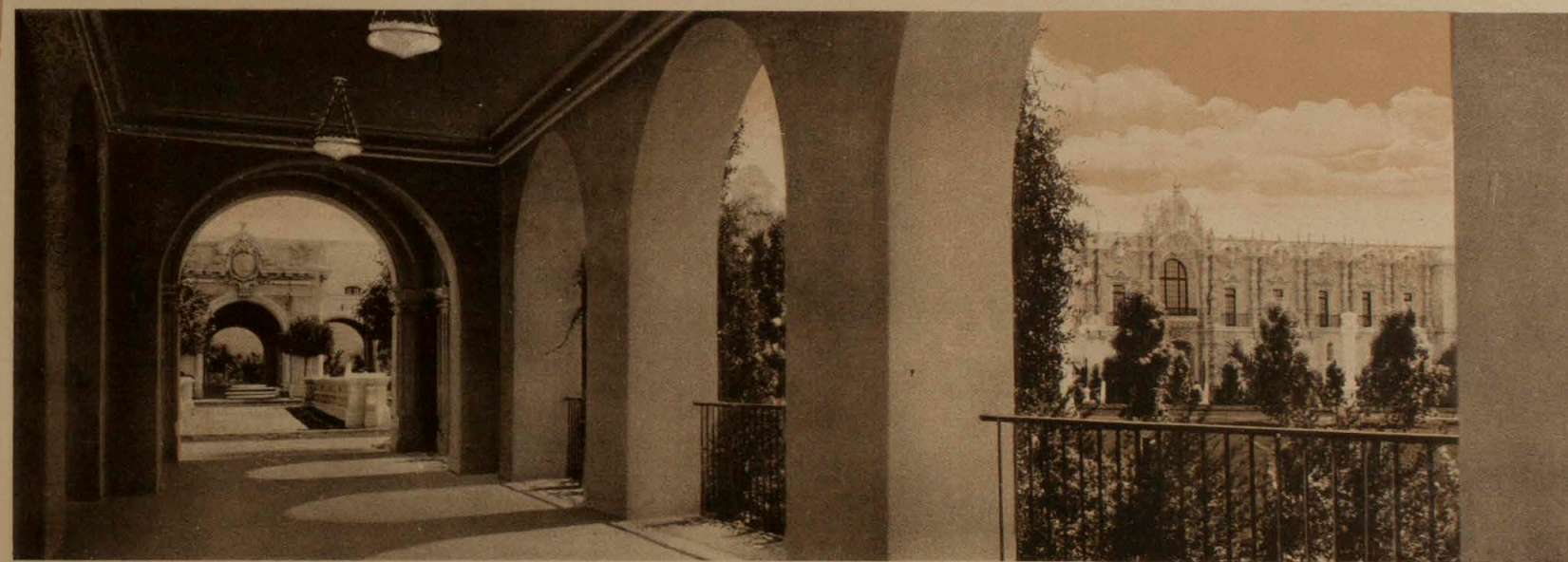




Reflections in the large Lagoon, Panama-California Exposition.



Southern California Counties Building, Panama-California Exposition.



Vista through the Arches, Panama-California Exposition.





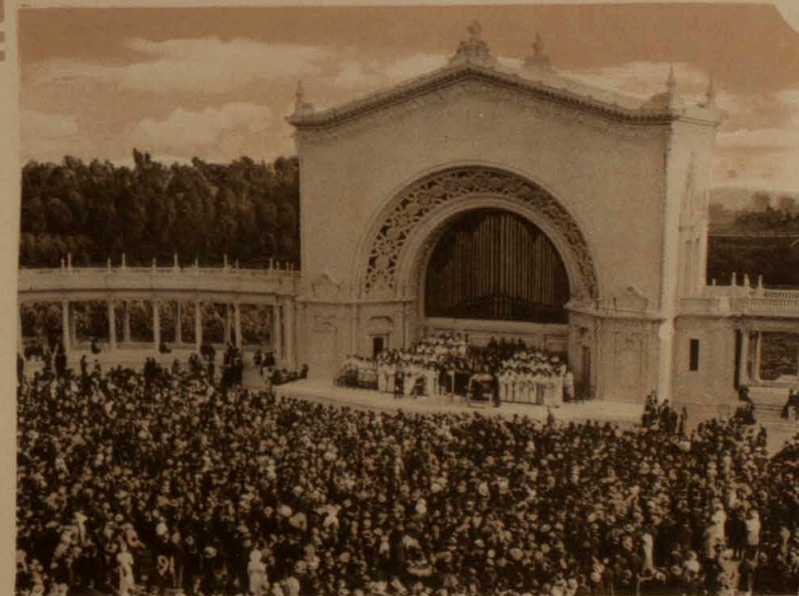
The Botanical Gardens showing Botanical Building on the left and Varied Industries Building in the Center,  
Panama-California Exposition.



Dancing on the Lawn in Front of Varied Industries Building.



Artillery Practice, Balboa Park.

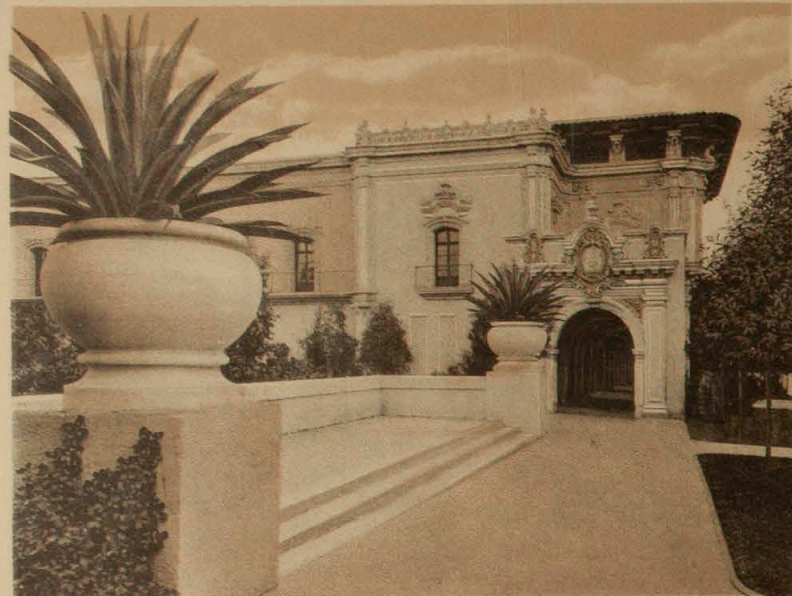


Spreckel's Pipe Organ.

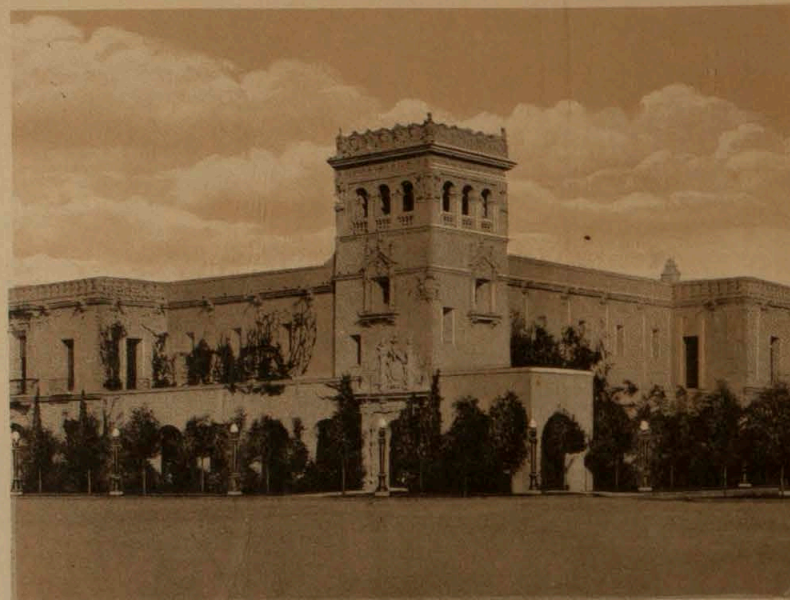


Reflections in the Lagoon.

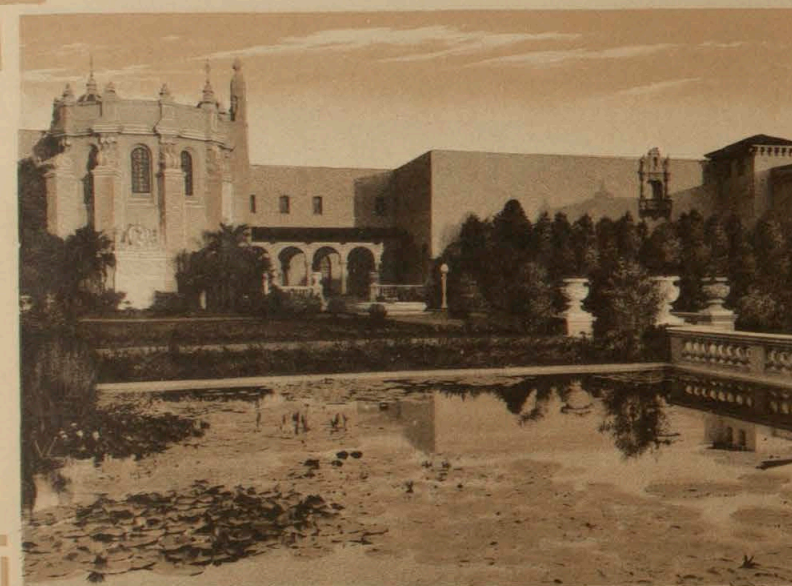




Vista of Commerce and Industries Building.



Home Economy Building.



Lily Pond and Varied Industries Building.



Ethnology Building and the Dome and Tower of California Building.



